

Vol III Issue VIII May 2014

ISSN No : 2249-894X

*Monthly Multidisciplinary
Research Journal*

*Review Of
Research Journal*

Chief Editors

Ashok Yakkaldevi
A R Burla College, India

Flávio de São Pedro Filho
Federal University of Rondonia, Brazil

Ecaterina Patrascu
Spiru Haret University, Bucharest

Kamani Perera
Regional Centre For Strategic Studies,
Sri Lanka

Welcome to Review Of Research

RNI MAHMUL/2011/38595

ISSN No.2249-894X

Review Of Research Journal is a multidisciplinary research journal, published monthly in English, Hindi & Marathi Language. All research papers submitted to the journal will be double - blind peer reviewed referred by members of the editorial Board readers will include investigator in universities, research institutes government and industry with research interest in the general subjects.

Advisory Board

Flávio de São Pedro Filho Federal University of Rondonia, Brazil	Horia Patrascu Spiru Haret University, Bucharest, Romania	Mabel Miao Center for China and Globalization, China
Kamani Perera Regional Centre For Strategic Studies, Sri Lanka	Delia Serbescu Spiru Haret University, Bucharest, Romania	Ruth Wolf University Walla, Israel
Ecaterina Patrascu Spiru Haret University, Bucharest	Xiaohua Yang University of San Francisco, San Francisco	Jie Hao University of Sydney, Australia
Fabricio Moraes de Almeida Federal University of Rondonia, Brazil	Karina Xavier Massachusetts Institute of Technology (MIT), USA	Pei-Shan Kao Andrea University of Essex, United Kingdom
Catalina Neculai University of Coventry, UK	May Hongmei Gao Kennesaw State University, USA	Loredana Bosca Spiru Haret University, Romania
Anna Maria Constantinovici AL. I. Cuza University, Romania	Marc Fetscherin Rollins College, USA	Ilie Pinte Spiru Haret University, Romania
Romona Mihaila Spiru Haret University, Romania	Liu Chen Beijing Foreign Studies University, China	
Mahdi Moharrampour Islamic Azad University buinzahra Branch, Qazvin, Iran	Nimita Khanna Director, Isara Institute of Management, New Delhi	Govind P. Shinde Bharati Vidyapeeth School of Distance Education Center, Navi Mumbai
Titus Pop PhD, Partium Christian University, Oradea, Romania	Salve R. N. Department of Sociology, Shivaji University, Kolhapur	Sonal Singh Vikram University, Ujjain
J. K. VIJAYAKUMAR King Abdullah University of Science & Technology, Saudi Arabia.	P. Malyadri Government Degree College, Tandur, A.P.	Jayashree Patil-Dake MBA Department of Badruka College Commerce and Arts Post Graduate Centre (BCCAPGC), Kachiguda, Hyderabad
George - Calin SERITAN Postdoctoral Researcher Faculty of Philosophy and Socio-Political Sciences Al. I. Cuza University, Iasi	S. D. Sindkhedkar PSGVP Mandal's Arts, Science and Commerce College, Shahada [M.S.]	Maj. Dr. S. Bakhtiar Choudhary Director, Hyderabad AP India.
REZA KAFIPOUR Shiraz University of Medical Sciences Shiraz, Iran	Anurag Misra DBS College, Kanpur	AR. SARAVANAKUMARALAGAPPA UNIVERSITY, KARAIKUDI, TN
Rajendra Shendge Director, B.C.U.D. Solapur University, Solapur	C. D. Balaji Panimalar Engineering College, Chennai	V.MAHALAKSHMI Dean, Panimalar Engineering College
	Bhavana vivek patole PhD, Elphinstone college mumbai-32	S.KANNAN Ph.D , Annamalai University
	Awadhesh Kumar Shirotriya Secretary, Play India Play (Trust), Meerut (U.P.)	Kanwar Dinesh Singh Dept.English, Government Postgraduate College , solan

More.....

Address:-Ashok Yakkaldevi 258/34, Raviwar Peth, Solapur - 413 005 Maharashtra, India
Cell : 9595 359 435, Ph No: 02172372010 Email: ayisrj@yahoo.in Website: www.ror.isrj.net



NRrhl x<+ds xkeh.k fodkl ea dly/hj m?kksx ea dk; j r efgykvka
dk ; kxnku % , d fo'ysk.kkRed v/; ; u
1/2 j k; i j] t kat xhj & pka k , oa dly ck ft ys ds fo' ksk l nHkZ eak

xk; =h xks y] euh"kk nps

"kksk Nk=k-

vkpk; L , oa foHkxk/; {k} vFk'kkL= foHkx xq ?kkl hnk l fo" ofo | ky;
1/2 dly; fo" ofo | ky; 1/2 fcykl i j 1/2 x-1/2

I kjka k :- çLrç "kksk i = ds svarxZ NRrhl x<+ds xkeh.k {ks=ka ea dly/hj m?kksx ea dk; j r
efgykvka dk v/; ; u fd;k x; k gß fdlurq mDr fo'k; da foLr rFk xgu v/; ; u grq
NRrhl x<+ds rhu ftyak j k; i j] t kat xhj & pka k , oa dly ck , oabuea5 fodkl [k.M rFk bu
fodkl [k.M ds svarxZ 50 xte i pk; rtsdk p; u çkFfed v/; ; u grqfd; k x; k gß pfd fd,
x, "kksk dk v/; ; u fdlurq dly/hj m | kska ea dk; j r efgyk gß vr%bl l nHkZ eamuds nek j k
dly/hj m | kska ds svarxZ fd, tkusokysdk; ZLo#i] mRi kfnr oLrqdsfoØ; 0; oLFk l sydj
çlr vk;] 0; ; , oacpr rFk efgykvka l sl fEcu/kr dly/hj m | kska ch l eL; kvka dk v/; ; u
rFk bl l nHkZ eal j dkjh uhr; ka ch Hkfedk , oaml dh dfe; ka dly j çkadr dj l çko çLrç
fd, x, gß

i Lrkouk %

df'k gh , d , d k {ks= gStgk; l dMlao'kzi gyshk efgyk, a?k] i fjokj , oacPka dks l Hkkyusds l kFk&l kFk
i j h n{krk dsl kFk dk; Zdrsgq i q 'kka l svf/kd /ku mi kftZ djrh jgh gß orZku ea; fn df'k {ks= ds fodkl dks
nçksrks 1950&51 eans'k ds G.D.P. ead'k dk ; kxnku 53% Fk tisorZku ea 14-1 ds fuE Lrj ij vk x; k A¹
fdlurqdf'k ij vkfJr tul ç; k dk çfr"kr 52% cuk jguk "kkpuh; gß df'k fodkl ds fxjrsxkQ usd'kdka ds
fodkl dsxkQ dksHk fxjk fn; k QyLo: i Hkjr h; df'k eaçokl] fuE vk;] __.kxLrrk tS h l eL; kvkaust l e
fy; k bu l eL; kvkaust gk d'kdka dks etnj cuusij foo" k fd; k oghani jh vlg jkst xkj dh ryk" k eabudk
çokl xkks l s "kgj ka dh vlg c<k QyLo: i df'k rFk bl l sl fEcu/kr dk; k e efgykvka ch l ghkfxrk c<h i jarq
df'k {ks= eafo | eku foHkku l eL; kvka ds i fj . kkeLo: i efgykvka } kjk df'k dk; k l sçlr vk; dk vkdkj U; u , oa
vi ; klr jgk gß Qyr%df'k {ks= eadk; j r efgykvka usLo; adks vkfFkZd : i l sl çk+ , oavkRe fuHkç dj usgrqdf'k
dsl kFk² xkeh.k {ks=ka eal pkyr dly/hj m | kska l sLo; adks tkMka Hkjr h; vFk; oLFk eaçkphu dky l sgh dly/hj
m | kska ch Hkfedk egROI wkZ jgh gß

NRrhl x<+jkt; eabl l nHkZ eav/; ; u djust j kkr gkrk gSfd Hkjr dh vkß r xkeh.k tul ç; k 68-
84% dh rgyuk ea NRrhl x<+xkeh.k vkcknh 76-76%] cgr v/kd gß Ans'k ea fl pkbZ l fo/kk, a 1/30% 1/2 rFk
vf/ldrj Ql ykadk mRi knu , d Ql yh gksus ds dkj . k jkt; ea th-Mh-i-h ead'k dk ; kxnku rksfxjrsqg 36% gks
x; k gß fdlurqvHk Hk jkt; dh 80% vkcknh dh vt hfodk dk ek/; e df'k gß³ i fj . kkeLo: i jkt; dh df'k vk;
vi ; klr , oal; u gS, d seaxkeh.k {ks=ka eal fFkfi r dly/hj m | kska ch Hkfedk Lojst xkj , oavrfjDr vk; vtü ds
: i eaegROI wkZ jgh gß ; s dly/hj m | kska i q 'kka ds l kFk² efgykvka dks 0; ki d Lrj ij Lojst xkj mi yCk dj kds
mudh vrfjDr vk; l tu dsek/; e ds: i eaegROI wkZ Hkfedk dk fuokç dj jgsgß

çLrç "kksk dk eç; v/; ; u fdlurq dly/hj m | kska ea dk; j r efgyk gSftuds ; kxnku dk eW; ka du
NRrhl x<+ds xkeh.k fodkl ds i fj i ç; ead'k mDr "kksk dk eç; mnas' ; gß

Title: "NRrhl x<+ds xkeh.k fodkl ea dly/hj m?kksx ea dk; j r efgykvka dk ; kxnku % , d fo'ysk.kkRed v/; ; u 1/2 j k; i j] t kat xhj & pka k , oa dly ck ft ys ds fo' ksk l nHkZ eak?", Source: Review of Research [2249-894X] xk; =h xks y] euh"kk nps yr:2014 | vol:3 | iss:8

1Economic Survey 2011-12
 2http://India factors in/India Census – 2011/Urban Rural Population india
 3gupea ; kno] NRrhl x<+dk fodkl , oapukfr; ka

v/; ; u dk mnns ; %&

1-xteh.k fodkl ea d/hj m | kxkaeak; j r efgykvka ds ; kxnu dk v/; ; u djuka
 'kxk dh i fj dYi uk, a%& çLrç "kxk ea fuEufyf [kr "kx; i fj dYi ukvka dh t k p dh x; h gA

1-xteh.k fodkl ea d/hj m | kxkaeak; j r efgykvka dk ; kxnu "kx; gA

'kxk çfo/kh %& çLrç "kxk ds v/; ; u dk {k= NRrhl x<+g} fdUrq I Ei wkZ NRrhl x<+ds xgu v/; ; u grq NRrhl x<+ds rhu ftyka jk; i j] pka k] dkjck dk p; u l fopkj fd; k x; k gA p; fur ftyka ds varxZ 5 fodkl [k. Mka , oaçR; d fodkl [k. M l s 10 xte i p k; r , oaçR; d xte i p k; r ka l s 10 efgykvka dk p; u nò fun"ku ç.kkyh nekj k fd; k x; k gA bl çdkj dy 500 efgykvka l svud iph HkjokbzxbZpfd çLrç "kxk dk v/; ; u fclnwd/hj m | kx ea dk; j r efgykvka ds vr%bl grq500 efgykvka ea d/hj m | kx ea dk; j r 66 efgykvka dks çkFked v/; ; u grq p p k x; k gA çLrç "kxk dh mnns ; i firZ grq çkFked , oaf}rh; d nksuka çdkj ds vkçMka dk ç; kx fd; k x; k gS ft l ea çkFked vkçMka dk l xg.k vuq iph dsek; e l sfd; k x; k gS tçfd f}rh; d vkçMka ds L=kr xteh.k efgykvka i j gq "kxk çdk] "kxk i=] çdkf"kr i=&i f=dk,] l ekpkj i=] l jdkjh , oaxj l jdkjh l oçk.k kafj i kZ/eaçdkf"kr vkçMksj gsgA

v/; ; u dh l hek, a%&

1 l e; /ku , oaJe dh l hekvdks/; ku eaj [krsgq NRrhl x<+ds dny 3 ftyka dk p; u fd; k x; k gA
 2v/; ; u grq p p h xbZ500 xteh.k efgykvka ea l s , d h 66 efgykvka dk v/; ; u fd; k x; k gS tçdk/hj m | kx ea dk; j r gS tçfd d f'k , oal ok {k= ea dk; j r efgykvka dk xteh.k fodkl ea Hkfedk dks v/; ; u ea "kxfey ugha fd; k x; k gS

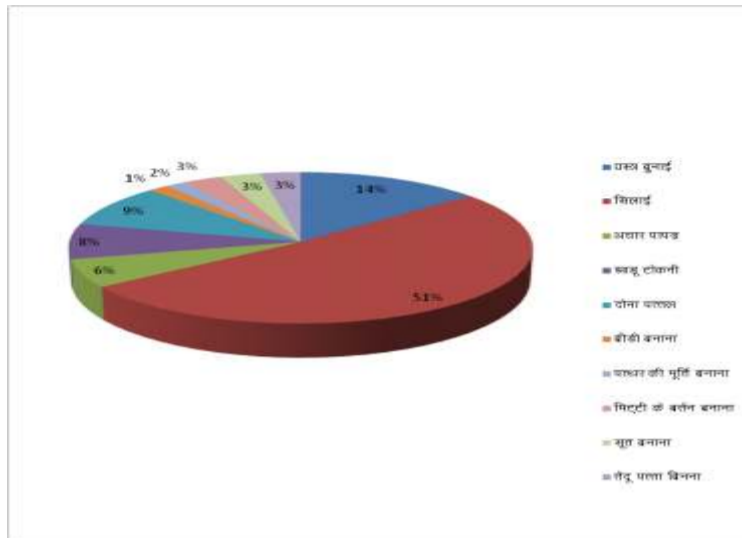
rkfydk Økad 1-1
 p; fur ftyka ea d/hj m | kx ea dk; j r efgykvka }kj k fd; s tkus okys dk; k dk foj .k

ftyk	fodkl [L.M	foHku dh/hj m kx ea dk; j r efgykvka dk l ç; k										
		ol= capbl	fl ybl	vpij tlll	>MhVidua	niuk l r y	oMh culuk	l Hg] dh enl culuk	feVh ds çru culuk	l r culuk	nnl l r culuk	dy; kx
jl; ij	fcytk<	1(5) (11.11)	15(75) (44.11)	----	03(15) (60)	----	----	----	1(5) (50)	----	----	20(100) (30.30)
	d l lly	2(22.22) (22.22)	16(66.66) (17.64)	----	01(11.11) (20)	----	----	----	----	----	----	09(100) (13.63)
tlat xj pñit	uobx<	1(25) (11.11)	01(25) (2.94)	01(25) (25)	01(25) (20)	----	----	----	----	----	----	04(100) (6.06)
	llex<	5(23.89) (55.55)	10(47.61) (29.41)	03(14.28) (75)	----	01(4.76) (16.66)	----	1(4.76) (100)	1(4.76) (50)	----	----	21(100) (31.31)
dljcl	llyh	----	02(16.66) (5.88)	----	----	05(41.66) (83.33)	01(8.33) (100)	----	----	02(16.66) (100)	02(16.66) (100)	12(100) (18.18)
dy; kx		09(13.63)	34(51.50)	04 (6.06)	05(7.57)	06(9.09)	01(1.51)	01(1.51)	02(3.03)	02(3.03)	02(3.03)	66(13.02) (100)

L=kr & 1- i kFked l oçk.k 2011&12

Vhi 2-dksVd eamfYyf[kr I a; k Afr'kr gS

xxQ & 1-1
fofHku dh/hj m | kska ea dk; j r efgykvka dh I a; k Afr'kr ea



mijDr rkfydk 0-1-1 I s; g Li 'V gkrk gSfd xkeh.k efgykvkanekjk Lojst xkj ds: i eafd, tkus okyk dk; Zfl ykbzgsft I eabudh I ghkfxrk I oqk.k eavf/kdre 51-50% i kbzxbz tcfv vl; dk; k t s & vpkj & i ki Mf > kMwVkdutj nksuk i Rry] chMh cukuk] i RFkj dh efr] I w cukuk] oL= cukbz rniRrk fcuuk t s dk; k eabudh I ghkfxrk dk cfr'kr U; u jgkA fd; sx, I oqk.k I sKkr gkrk gSfd dPpseky] i mch, oamfpr foi .ku 0; oLFk dsVHko usmDr Lojst xkj xfrfof/k; kacs l kj dksl dhpr fd; k gS oghant jh vj i kfjokjd nkf; Ro rFk i ; kR i kfJfed cflr usefgykvkadksfl ykbzrFk oL= cukbz t s sdk; k l seq; rj ij tkMk gA

rkfydk 0ekd 1-2
p; fur ftyka ea dh/hj m | kska ea dk; j r efgykvka }kj k mRi kfnr oLrqs dk fo0; I a; kh foj .k

rtyk	fodkl [kM	mRi inu fod: dk L#iu			mRi inu dh fod: dk Lo#i		
		xib ea	'lgj ea	dy; lx	filci ea	QV/dj ea	dy; lx
jk; ij	fcytk<	15(75)	5(25)	20(100)	14(70)	06(30)	20(100)
		(28.30)	(38.46)	(30.30)	(43.75)	(17.64)	(20.30)
	dl Mly	08(88.88)	01(11.11)	09(100)	-----	09(100)	09(100)
		(15.09)	(7.69)	(13.69)		(26.47)	(13.69)
tlatxj pliki	uobx<	04(100)	-----	04(100)	-----	04(100)	04(100)
		(7.54)		(6.06)		(11.76)	(6.06)
	llex<	18	03	21(100)	10(47.61)	11(52.38)	21(100)
		(33.96)	(23.07)	(31.81)	(31.25)	(32.35)	(31.81)
dijci	liyh	8(85.71)	4(33.33)	12(100)	8(85.71)	04(33.33)	12(100)
		(15.09)	(30.76)	(18.18)	(25)	(11.76)	(18.18)
dy; lx		53(80.30)	13(19.69)	66	32(48.48)	34	66
		(100)	(100)	(100)	(100)	(51.51)	(100)

L=kr & 1- i kFkfed I oZk.k 2011&12
 Vhi 2- dksVd eamfYyf[kr I d; ; k Afr"kr gS

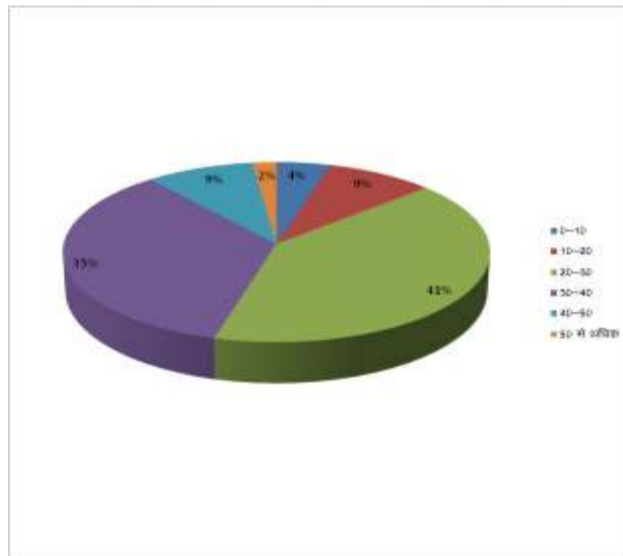
mi j kDr rkfydk 1-2 dsfo"ysk.k I sKkr gsrk gSfd dV/hj m | kxkae adk; j r 19-69% efgykvkanekjk mRi kfnr oLrqdk foØ; "kgjkaeafd; k tkrk gStcfd 80-30% efgykvka }kjk vkoxeu I adkh I fo/kkvkadsvHkko eamRi kfnr oLrqkadh foØh de eV; ij gh xkp dsgkV&cktjkkaeagh fd; k tkuk i k; k x; kA dV/hj m | kxkae eamRi kfnr oLrqkadsj [kj [kko , oafoi .ku I adkh 0; oLFk u gksusdsdkj .k foØ; dk Lo: i dkOh v0; ofLFkr , oa nskiwk i k; k x; kA vPNh vk; feyusdsdkj .k mRi kfnr oLrqkadh foØ; e[; r%vf/kdre 1/51-51% 1/2 QV/dj : i eadh tkrh gS fdUrql kFk gh cMs0; ki kfj; kadsnck] I gdkjh foØ; I febr , oaj [kj [kko dh I eL; k dsdkj .k 48-48% efgykvka }kjk mudsmRi knu dk foØ; Fkkd : i eade fder ; k i fjfLFkfro" k ykx I sde eV; ij fd; k tkuk i k; k x; kA

rkfydk Øekad 1-3
 p; fur ftyka ds dV/hj m | kx ea dk; j r efgykvka }kjk vftir vk;] 0; ; , oa cpr I adkh foj .k

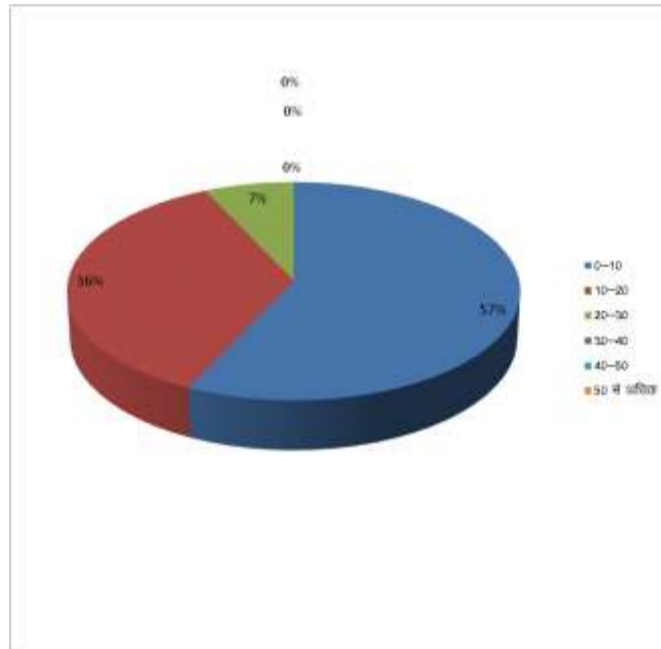
वर्ग	वर्ग का नाम	पुरुष (वर्षों में बंटाई)						महिला (वर्षों में बंटाई)						कुल (वर्षों में बंटाई)						
		0-10	10-20	20-30	30-40	40-50	50+ वर्ष	0-10	10-20	20-30	30-40	40-50	50+ वर्ष	0-10	10-20	20-30	30-40	40-50	50+ वर्ष	
ग्रामीण	ग्रामीण	21 (33.3)	22 (35.3)	22 (35.3)	22 (35.3)	22 (35.3)	22 (35.3)	10 (100)	10 (100)	10 (100)	10 (100)	10 (100)	10 (100)	10 (100)	10 (100)	10 (100)	10 (100)	10 (100)	10 (100)	10 (100)
	ग्रामीण
शहरी	शहरी
	शहरी
ग्रामीण शहरी	ग्रामीण शहरी
	ग्रामीण शहरी
ग्रामीण शहरी	ग्रामीण शहरी
	ग्रामीण शहरी

L=kr & 1- i kFkfed I oZk.k 2011&12
 Vhi 2- dksVd eamfYyf[kr I d; ; k Afr"kr gS

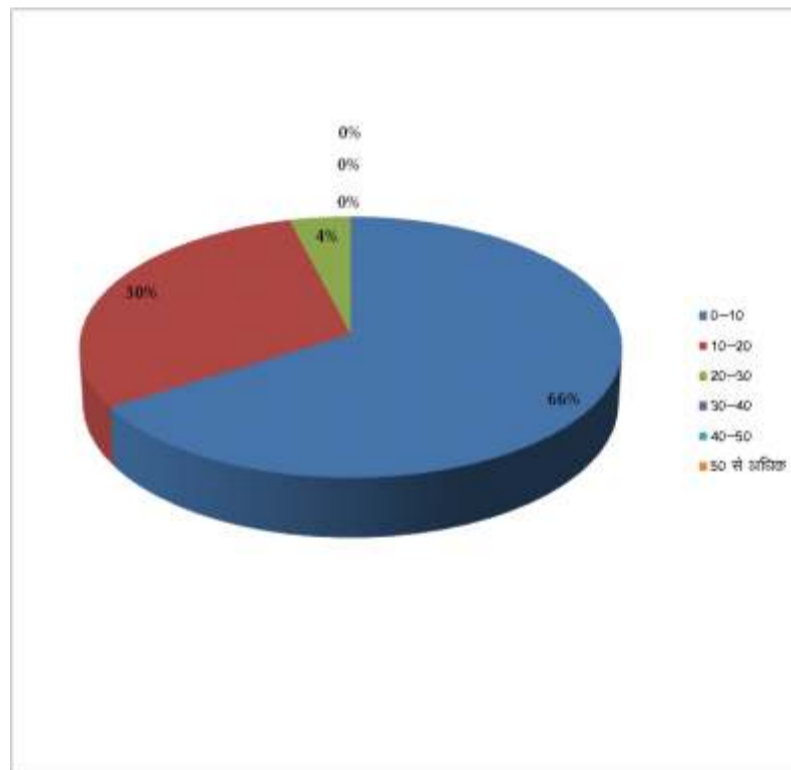
xtQ& 1-3-1
 dV/hj m | kx ea dk; j r efgykvka dk okf"kd vk; ; g tkj eaz



xiQ & 1-3-2
dphj m | ksx ea dk; j r efgyvka dk okf'kd 0; ; %gtkj ea



xiQ & 1-3-3
dphj m | ksx ea dk; j r efgyvka dk okf'kd cpr %gtkj ea



mi jkDr rkfydk Ø- 1-3 dsfo"ysk.k l sKkr gkrk gSfd l of{kr efgykva ea d/hj m | kx ea dk; j r efgyk, atksfd 13-2% gSftudsnekjk vftR okf'kd vk; ea20]000&30]000 : - rd okf'kd vk; çklr djusokyh efgykva dh l ; k vkj ru : i l s5-4 vf/kdre jgh] fdUr qvf/kdre vk; ds : i ea50]000 : - okf'kd vk; vftR djusokyh efgykva dh l ; k vR; r de 1-51% gh jghA

ftl dk eq; dkj.k fd, x, l of{k.k ea; g ik; k x; k fd i kfjokjd nkf; Ro] fctyh] dPpsey dh deh] foRrh; l fo/kkvkads vHko tS h l eL; k, ad/hj m | kxkae efgykva dh i ; k r l ghkfxrk rFkk vi f{kr vk; of) dh jkg eack/kd jgh gA l kfk gh mi jkDr dkj.k kaal sd/hj m | kxkae efgykvanekjk l fEcfU/kr dk; k dksvf/kdre : i l s6&7 ?ka/sfd; k tkuk ik; k x; kA vi ; k r vftR vk; usefgykva ds0 ; ; rFkk cpr dksHkh çR; {k : i l s çHkfor fd; k gA

10 g tkj : - okf'kd 0 ; ; djusokyh efgykva dk çr"kr vf/kdre 167-06% 1/2 jgk fdUr q0 ; ; de gkus dsvk/kkj ij ekuk tk l drk gSfd bu efgykva ea l EHkor% cpr l eakh çofRr dk folRkj gupk gA cpr l eakh flFkr dk fo"ysk.k djus ij Kkr gkrk gSfd d/hj m | kx ea dk; j r efgykva ea l s25% vFkkR , d frgkbZ efgykva dk cpr ; kxnu "kj; gA vFkkR l of{kr efgykva ea 75% efgykvanekjk gh 10]000 l s30]000 : - dh okf'kd cpr dh tk jgh gA ftueavk] ru 6-6 efgykvanekjk vf/kdre 10]000 dh okf'kd cpr fd; k tkuk ik; k x; kA i ; k r vk; u çklr gkus ds dkj.k bu efgykvanekjk dpy çfu; knh t : j r kadks i jk fd; k tkuk , oacpr çofRr dk "kj; gkus LokHkkfod gA vr%bl vk/kkj ij dgk tk l drk gSfd efgykva ds vk; rFkk cpr l eakh ; kxnu l rksktud ughagA

rkfydk Øekad 1-4
p; fur ftyka ds d/hj m | kxka ea l j dkj }kj k Anr l fo/kkvka dk foj.k

ftyk	fodkl [k.M	l j d j }kj k Anr l gk: rk Akir efgykva dh l ; k					
		_k	dPpley	fctyh	l kuh	mfr ef;	dy; lx
jk; ij	fctbk<	13(65)	01(5)	02(10)	1(5)	03(15)	20(100)
		(30.23)	(20)	(25)	(20)	(60)	(30.30)
	dl Mly	06(66.66)	03(33.33)	-----	-----	-----	09(100)
		(13.95)	(60)				(13.63)
tlatxj plkit	uolx<	03(75)	-----	01(25)	-----	-----	04(100)
		(6.97)		(12.5)			(6.06)
	ilex<	16(76.19)	-----	02(9.52)	02(9.52)	01(4.76)	21(100)
		(37.20)		(25)	(40)	(20)	(31.81)
djct	ilyh	05(41.66)	1(8.33)	03(25)	02(16.16)	1(8.33)	12(100)
		(11.62)	(20)	(37.5)	(40)	(20)	(18.18)
dy; lx		43(65.15)	05(7.57)	08(12.12)	05(7.57)	05(7.57)	66
		(100)	(100)	(100)	(100)	(100)	(100)

L=kr & 1- i k fkd l of{k.k 2011&12
Vhi 2-dksVd eamfYyf [kr l ; k Afr"kr gS

Table 1-4
Percentage of respondents by gender

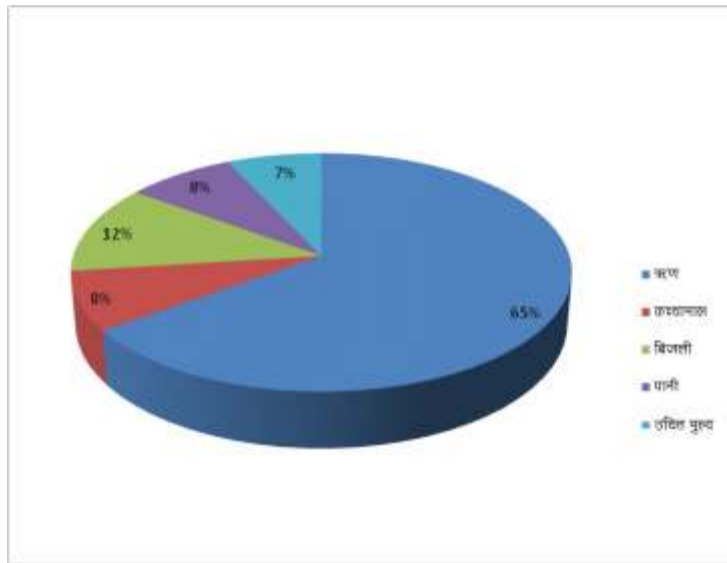


Figure 1-4 shows the percentage of respondents by gender. The data is as follows:

Gender	Percentage
Male	65%
Female	34%
Others	1%

Figure 1-4

Figure 1-4 shows the percentage of respondents by gender. The data is as follows:

Gender	Percentage
Male	65%
Female	34%
Others	1%

Figure 1-4 shows the percentage of respondents by gender. The data is as follows:

Gender	Percentage
Male	65%
Female	34%
Others	1%

i f j f p r g s v r % b l I E c l / k e a m u d s f o p k j , o a l q k o f u f " p r : i I s b u d V / h j m | k x k a d s f o d k l d h f n " k k e a I d k j k R e d f l F k f r f u f e r d j u s e a l g k ; d g k x a A

6 X ; k j g o h a i p o ' k h z ; k s t u k H k k x & 1] ; k s t u k H k o u u b z f n Y y h i " B 1 & 2 8

I a n H k z x a F k I p h

- 1-; k n o e g l n j f l g - " k e l j x k i k y - 1/2008 1/2 p f u t h { k s e a e f g y k v k j { k . k % l e L ; k , a v i s j I e k / k u } f j t o z t u j y v k n d I k s ' k y , . M y k b Q I k b d] t u o j h & t u 4 1/2 1/2 % 3 5 1 & 3 5 4
- 2-f r o k j h j h o k L r o l I p o r k f d j u y r k - 1/2008 1/2 p l r u k " k g j d h ? k j y w , o a d k ; z l k j h e f g y v k a d h A c a k d h ; { k e r k d k v / ; ; u j f l p z t u j y v k n d I k s ' k y , . M y k b Q I k b d] t u o j h & t u 4 1/2 1/2 % 4 4 2 & 4 4 6
- 3-J h o k L r o e k f y d k - 1/2009 1/2 p d k e d k t h e f g y v k a d k I k e k f t d v k f F k z d f l F k f r] f j l p z t u j y v k n d I k s ' k y I k b d t u o j h & t u] 6 1/3 1/2 % 6 1 8 & 6 2 0
- 4-f l g M h - i h - 1/2009 1/2 p x t e h . k e f g y k I " k f D r d j . k j f j l p z t u j y v k n d I k s ' k y , . M y k b Q I k b d] t u o j h 6 1/3 1/2 % 6 4 0 & 6 4 2
- 5-i k y j k e e k c w 1/2009 1/2 p j h o k f t y s d h n f y r e f g y v k a d k j k t u f r d I " k f D r d j . k b j f j l p z t u j y v k n d I k s ' k y , . M y k b Q I k b d] t u o j h & t u 6 1/3 1/2 % 6 4 7 & 6 5 0
- 6-v k f F k z d I o k . k H k k j r I j d k j] f o f H k u A f r ; k j 2 0 1 0 & 1 1 I s 2 0 1 2 & 1 3
- 7-v k f F k z d I o k . k j N U k h l x < + " k k l u 1/2 v k f F k z d , o a l k f [; d h ; I p k y u k y ;] N U k h l x < } j k ; i j 1/2 f o f H k u A f r ; k j 2 0 1 0 & 1 1 I s 2 0 1 2 & 1 3 1/2
- 8-H k k j r 2 0 1 1 & 1 2] I p u , I - i f c y d s ' k u g k m l] f n Y y h j i " B & 1 8 4
- 9-f = i k B h I a t ;] f = i k B h p n u - 1/2012 1/2 N U k h l x < + e a - f ' k j N U k h l x < + o g n - I n H k z i " B & 2 8 8
- 10-d j e k d j] d e y 1/2010 1/2 N U k h l x < + d h x t e h . k e f g y k , j i f c y d s ' k u] " k j n x k r k j v { k j I a . k d % f O ; f V o d E l ; v j] j k ; i j -
- 11-x k r k j , I - I h , o a v x o k y , e - M h - 1/2008 1/2 x t e h . k j k s t x l j (o r e k u f l F k f r r F k k H k f o ' ; d s f y , j . k u h f r ; k j i " B & 1 9 5 & 2 0 1] b u k J h i f c y " k l j j k ; i j -
- 12-i l r [k M h - I h - 1/2009 1/2 H k k j r e a y ? k q , o a d V / h j m / k x] i " B & 2 0 1 0 & 2 2 3] f o " o H k k j r h i f c y d s ' k u l I u b z f n Y y h
- 13-v f [k y s ' k , I - , o a " k o p y k I a ; k 1/2014 1/2 x k ; = h i f c y d s ' k u l I f c f g ; k j j h o k
- 14-" k o p y k , I - , e - , o a l g k ; f " k o i n t u 1/2004 1/2 I k f g R ; H k o u i f c y d s ' k u l I v k x j -
- 15-c n y k o f o d k l r F k k e f g y k , j g f j H k i e] 2 9 e k p 2 0 1 3] i " B & 3
- 16-f ' k { k s e a e f g y k , j g f j H k i e 8 e k p 2 0 1 3 -
- 17-www.ifad.org/events/op/2008/microfinance.htm
- 18-en.wikipedia.org/wiki/woman-in-india#workforce-participation.
- 19-www.indianchild.com/woman-of-rural-india.htm.
- 20-planningcommission.nic.in/reports/publications/pub80-village-and-cottage-industry.
- 21-www.epw.in/system/files/pdf/1954-6/4-5-cottage-industries-in-madras--state.pdf.



xk ; = h x k s y
" k s k N k = k

Publish Research Article International Level Multidisciplinary Research Journal For All Subjects

Dear Sir/Mam,

We invite unpublished Research Paper, Summary of Research Project, Theses, Books and Books Review for publication, you will be pleased to know that our journals are

Associated and Indexed, India

- ★ Directory Of Research Journal Indexing
- ★ International Scientific Journal Consortium Scientific
- ★ OPEN J-GATE

Associated and Indexed, USA

- DOAJ
- EBSCO
- Crossref DOI
- Index Copernicus
- Publication Index
- Academic Journal Database
- Contemporary Research Index
- Academic Paper Database
- Digital Journals Database
- Current Index to Scholarly Journals
- Elite Scientific Journal Archive
- Directory Of Academic Resources
- Scholar Journal Index
- Recent Science Index
- Scientific Resources Database

Review Of Research Journal
258/34 Raviwar Peth Solapur-413005, Maharashtra
Contact-9595359435
E-Mail-ayisrj@yahoo.in/ayisrj2011@gmail.com
Website : www.ror.isrj.net