



## THE SCENARIO OF CROP PRODUCTION IN PURULIA DISTRICT

**Sudarshan Sing Sardar<sup>1</sup> and Uttam Kumar Patra<sup>2\*</sup>**

<sup>1</sup>Ex- Student, Department of Geography, SKB University, Purulia, West Bengal .

<sup>2</sup>Faculty Member of J K College, Purulia, West Bengal.

\*Corresponding author : [uttampatrageo@gmail.com](mailto:uttampatrageo@gmail.com)

### ABSTRACT :

The paper is focused on overall crop production of Purulia district and block wise variation of crop production performance. Crops are classified two categories, one is Kharif crop and another is Rabi crop. A comparative study tries to represent the crop production scenario of Purulia district. It helps to know individual performance and capacity of production of blocks. To take appropriate agricultural development planning essential to know the present condition .The study also gives the little information of blocks individual percentage of production and characteristics of production.

**KEYWORDS :** Kharif crop, Rabi crop, crop Production.

### INTRODUCTION

India is agriculturally rich country. Agriculture is the process of crop production. It is the science or practice of farming, including cultivation of the soil for growing of crops and the rearing of animals to provide food, wood and another. Agriculture is the practice of large scale soil cultivation in order to produce crops (Watson, 1976).Though we are living in industrial age we cannot ignore the importance of the agriculture in the economy of a country. Agriculture supplies most of the food and raw materials of our agricultural industry. Distribution of rainfall, temperature and soil makes difference quality and quantity of the agricultural production. Except these physical factor government policies, level of scientific technology, transport, land utilization method are important factor which are control the agriculture of a region. West Bengal is the leading producer of rice and other crop .The performance of crop production is varying from district to district. This difference is due to different physical conditions of the state. Burdwan is the leading producer of rice. This district is covered by plain region and suitable for rice cultivation. Although the district depends on monsoon rain and produced different types of kharif, rabi and zayad. The district wise production is not extremely differing in West Bengal. But Purulia is known as backward region and agriculturally low production district .So, it is need to know production of the crop and amount of the crop.

### OBJECTIVE



The main objective of the study is to find out the crop production scenario and blocks wise variation of crop production performance of Purulia district in 2014-2015.

### DATA COLLECTION AND METHODOLOGY

Research is done by secondary data. Data is collected by District Statistical Hand Book. Data are

gathered and calculated in Ms excel. On the basis of crop production data major crops are classified into two categories one is kharif and another is rabi crop. Rice (Aus, Aman), maize, sugarcane, til, considered as the kharif crop. Wheat, musur,gram,mustard ,potato are considered as the rabi crop. After the classification, the productions of different blocks have been compared. Based on this comparison ,the study try to find out the Sub- division wise variation of the production performance .Data are calculated in MS excel and different types of diagram are used to represent the scenario of the crop production of different blocks. Maps are prepared in ArcGIS.

**ANALYSIS**

The crop production scenario of the district is represented below.

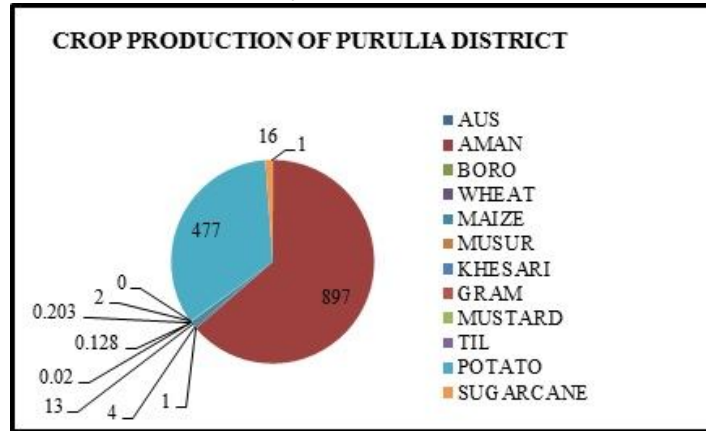


Figure1: Crop Production Of Purulia District

In 2014-2015 total crop production is 1411.702 where 927.11 Thousand ton kharif and 483.725 thousand ton Rabi crop. Among the ten crops Aman is highest which is cultivated in rainy season. Potato is the second largest production among the crops. After rice (Aman), potato sugarcane is occupied the position. On the basis of kharif production Barabazar takes highest position and Neturia is lowest position.

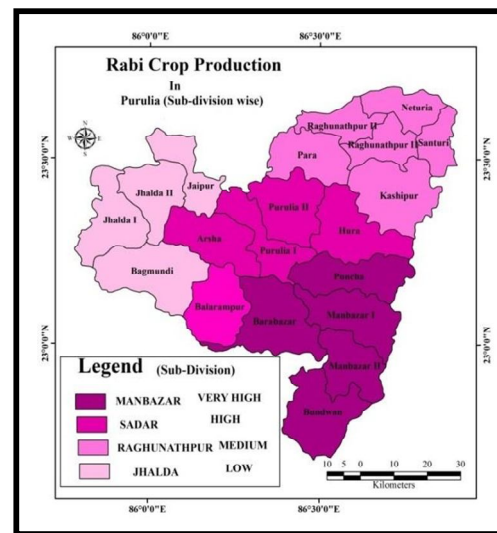
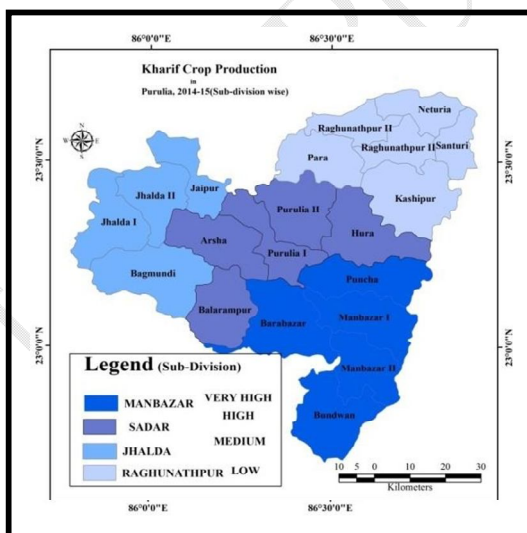


Figure:2&3 respectively represent Kharif and rabi Crop Production in Purulia ,2014-2015 (Sub Division Wise)

**MANBAZAR SUB-DIVISION**

Manbazar sub-division is produce higher amount of the kharif and rabi crop than other three sub division of Purulia district. This sub- division is occupied 27.64% of kharif and 53 % of total rabi crop production .It occupied 36% of total production of the district.

**SADAR SUB-DIVISION**

Total production of sub division is 446.638(31.63% of total production) thousand ton. In this sub division Kharif production is higher than the total rabi production .It occupied 26.97%of total kharif production and 40.63% of the rabi production .It positioned second in both kharif and rabi production .

**RAGHUNATHPUR SUB-DIVISION**

Sub - division is produced 207.081(22.31% of kharif) thousand ton kharif and 28.79(5.9% of rabi) thousand ton rabi crop. This division bottom in kharif and third in rabi crop production among the four Sub-division of the district. It occupied 16.70% of total production of the district.

**JHALDA SUB- DIVISION**

This division positioned third in kharif production and lowest in rabi production Total kharif production of the Sub-division is 214.236 thousand ton (23.08% of kharif) and total rabi crop production of the Sub-division is 1.53(0.25% of rabi)thousand ton .This division occupied 15% of total production of the Purulia district

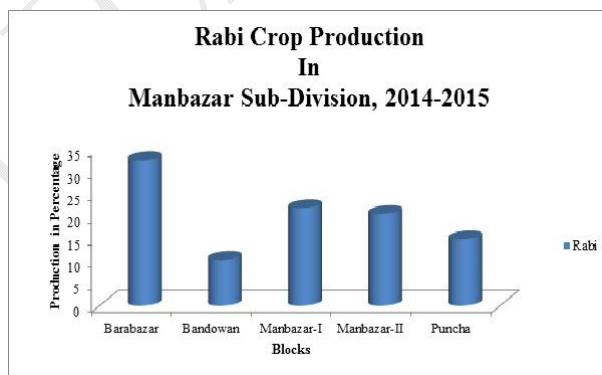
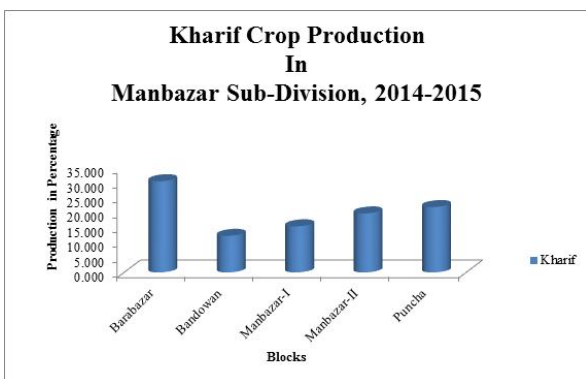


Figure: 4 & 5 respectively represent Kharif and rabi Crop Production in Manbazar Sub Division, 2014-2015

**MANBAZAR SUB-DIVISION**

Barabazar is the highest producer of kharif crop among the block of Manbazar Sub- division. This block produced 30.57% kharif crop of the total production of the Manbazar Sub-division. Bandwan is the lower producer of kharif crop of this division. Manbazar –II produced 19.79% kharif when manbazar –I is produced 15.45% half of the production of the Barabazar.Among the five blocks of the Manbazarsub-division Pancha is positioned third in kharif production. Like the kharif Barabazar is highest in rabi production and lowest position is occupied by the Bundwan block. Medium crops production is seen in Manbazar-I and Manbazar-II blocks.



Figure 6 & 7 respectively represent Kharif and rabi Crop Production in Sadar Division, 2014-2015

**SADAR SUB-DIVISION**

In this sub division Arsha block occupied the top position in both kharif(29.02%)and rabi(68.95%) production. Percentage of kharif production is lower in Purulia- I(15.38%) Purulia-II ( 16.83%) blocks and Hura is the second producer of kharif crop of this division.Hura is no significant production of rabi crop. Balarampur positioned second in rabi crop production.

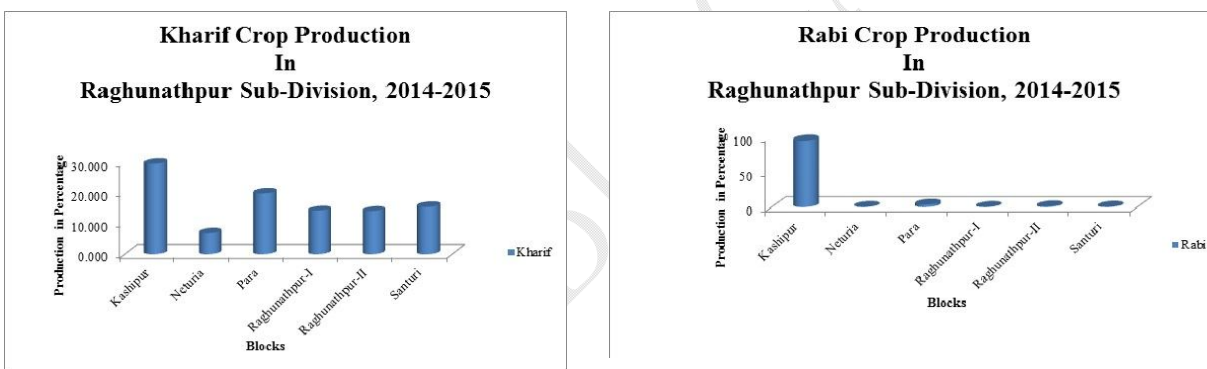


Figure 8 & 9 respectively represent Kharif and rabi Crop Production in Raghunathpur Sub Division, 2014-2015

**RAGHUNATHPUR SUB-DIVISION**

Among the blocks of the sub division 29.57% kharif crop is occupied by Kashipur block. Followed by Para (19.81%), Raghunathpur-I (14.15%), Raghunathpur-II (14.02%). Only 6.56% of the kharif is occupied by the Neturia block. Rabi crop of the division is very low and it concentrated in Kashipur block.94.15 % of rabi crop is produced in Kashipur block.3.5% Rabi is produced in Para block. Other four blocks are less significant producer of the rabi crop

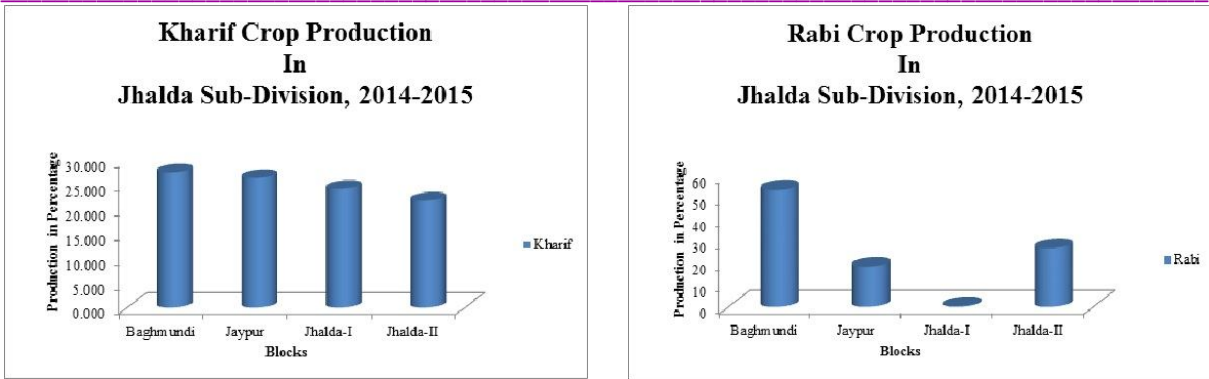


Figure:10 and 11 :Kharif Crop and Rabi Production in Jhalda -subdivision,2014-2015

**JHALDA SUB DIVISION**

In Jhalda sub division kharif production is comparable high in Baghmundi and low inJhalda-II block.Joypur and Jhalda-I are medium producer of kharif crop.Rabi crop performance of the block is very low.Baghmundi is high producer of rabi crop among the blocks of this sub - division.

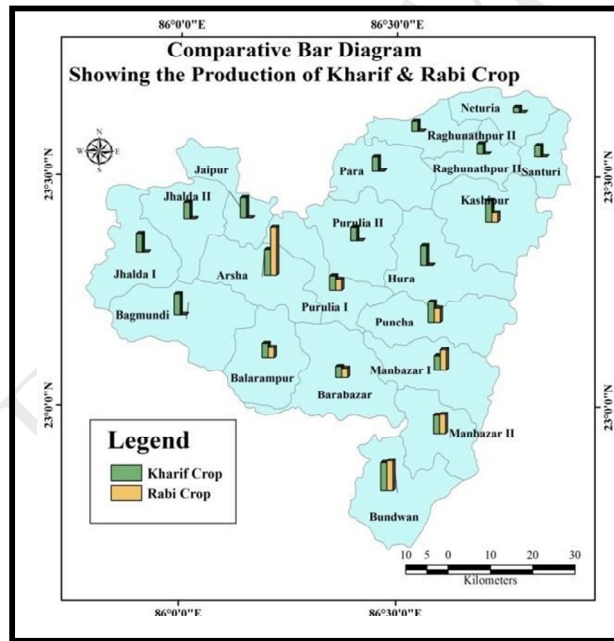


Figure: 12 Comparative Bar Diagram showing The production of Kharif and Rabi crop

**COMPARATIVE ANALYSIS**

Bar diagram compare the production of kharif and rabi crop of Purulia district. Kharif and rabi production difference is high in Arsha, Purulia - II, Hura, Baghmundi, Joypur, Jhalda I and Jhalda II blocks. Medium production difference is seen in Purulia - I, Kashipur, Para, Raghunathpur-I, Raghunathpur II and Santuri blocks. Manbazar, Bundwan, Manbazar- II, Nituria ,Balarampur, Pucha, Barabazar are the lower production difference blocks.

## CONCLUSION

It is shows that crop production of the district is very low. Block wise difference of crop production is very high. Maximum production concentrated on mainly two crop.one is Aman( kharif) crop and another is potato (rabi crop). Sugarcane production only concentrated on Arsha block. Agricultural crop type and production indicate that cultivator is cultivated crop for food demand. It is said that agricultural development is helps to improve people's economy and life style .It help to improve indirectly literacy, health condition of the district. Crop production scenario shows that the production of kharif is more than the rabi production.

## REFERENCES

- A.Afroz, et al. (2014, August). The Changing Scenario in Indian Agriculture: A Review. *International journal of Scientific Research in Agricultural Sciences*, 118-127.
- K.Sonia, S. &. (2017, March). Agricultural Productivity in India: Trends,. *International Journal of Science and Research (IJSR)*, 6(3), 516-520.
- M.Anupama. (2014, April). Climate Change and its Impact on Agriculture. *International Journal of Scientific and Research Publications*, 4(4), 1-6.
- S.Pardeep, B.Anwasha (2012, Sptember). AGRICULTURAL RESEARCH IN INDIA: AN EXPLORATORY STUDY. 1(9), 59-74.



**Sudarshan Sing Sardar**

Ex- Student, Department of Geography, SKB University, Purulia, West Bengal .