

Vol 5 Issue 7 April 2016

ISSN No : 2249-894X

*Monthly Multidisciplinary
Research Journal*

*Review Of
Research Journal*

Chief Editors

Ashok Yakkaldevi
A R Burla College, India

Ecaterina Patrascu
Spiru Haret University, Bucharest

Kamani Perera
Regional Centre For Strategic Studies,
Sri Lanka

Welcome to Review Of Research

RNI MAHMUL/2011/38595

ISSN No.2249-894X

Review Of Research Journal is a multidisciplinary research journal, published monthly in English, Hindi & Marathi Language. All research papers submitted to the journal will be double - blind peer reviewed referred by members of the editorial Board readers will include investigator in universities, research institutes government and industry with research interest in the general subjects.

Regional Editor

Dr. T. Manichander

Sanjeev Kumar Mishra

Advisory Board

Kamani Perera Regional Centre For Strategic Studies, Sri Lanka	Delia Serbescu Spiru Haret University, Bucharest, Romania	Mabel Miao Center for China and Globalization, China
Ecaterina Patrascu Spiru Haret University, Bucharest	Xiaohua Yang University of San Francisco, San Francisco	Ruth Wolf University Walla, Israel
Fabricio Moraes de Almeida Federal University of Rondonia, Brazil	Karina Xavier Massachusetts Institute of Technology (MIT), USA	Jie Hao University of Sydney, Australia
Anna Maria Constantinovici AL. I. Cuza University, Romania	May Hongmei Gao Kennesaw State University, USA	Pei-Shan Kao Andrea University of Essex, United Kingdom
Romona Mihaila Spiru Haret University, Romania	Marc Fetscherin Rollins College, USA	Loredana Bosca Spiru Haret University, Romania
	Liu Chen Beijing Foreign Studies University, China	Ilie Pinteau Spiru Haret University, Romania
Mahdi Moharrampour Islamic Azad University buinzahra Branch, Qazvin, Iran	Nimita Khanna Director, Isara Institute of Management, New Delhi	Govind P. Shinde Bharati Vidyapeeth School of Distance Education Center, Navi Mumbai
Titus Pop PhD, Partium Christian University, Oradea, Romania	Salve R. N. Department of Sociology, Shivaji University, Kolhapur	Sonal Singh Vikram University, Ujjain
J. K. VIJAYAKUMAR King Abdullah University of Science & Technology, Saudi Arabia.	P. Malyadri Government Degree College, Tandur, A.P.	Jayashree Patil-Dake MBA Department of Badruka College Commerce and Arts Post Graduate Centre (BCCAPGC), Kachiguda, Hyderabad
George - Calin SERITAN Postdoctoral Researcher Faculty of Philosophy and Socio-Political Sciences Al. I. Cuza University, Iasi	S. D. Sindkhedkar PSGVP Mandal's Arts, Science and Commerce College, Shahada [M.S.]	Maj. Dr. S. Bakhtiar Choudhary Director, Hyderabad AP India.
REZA KAFIPOUR Shiraz University of Medical Sciences Shiraz, Iran	Anurag Misra DBS College, Kanpur	AR. SARAVANAKUMAR LAGAPPA UNIVERSITY, KARAIKUDI, TN
Rajendra Shendge Director, B.C.U.D. Solapur University, Solapur	C. D. Balaji Panimalar Engineering College, Chennai	V. MAHALAKSHMI Dean, Panimalar Engineering College
Awadhesh Kumar Shirotriya	Bhavana vivek patole PhD, Elphinstone college mumbai-32	S. KANNAN Ph.D , Annamalai University
	Awadhesh Kumar Shirotriya Secretary, Play India Play (Trust), Meerut (U.P.)	Kanwar Dinesh Singh Dept. English, Government Postgraduate College , solan

More.....

Address:-Ashok Yakkaldevi 258/34, Raviwar Peth, Solapur - 413 005 Maharashtra, India
Cell : 9595 359 435, Ph No: 02172372010 Email: ayisrj@yahoo.in Website: www.oldror.lbp.world



Review Of Research



ADOLESCENT'S PARENTAL SUPPORT FOR CHOOSING PROFESSION OF PHYSICAL EDUCATION AND ALLIED DISCIPLINE



Ovais Ahmad Rather¹, Naseer Mushtaq Rather² and Naseer Ud Din Waza³

^{1,3}M.PED Student at Government College of Physical Education Ganderbal.

²M.PED Student at University of Kashmir Hazratbal Srinagar.

ABSTRACT

The study was conducted to find out the parental support for choosing profession of physical education and allied discipline. The subject (N =120) male and female parents were selected randomly from District Ganderbal out of 120 subjects 60 from private schools and 60 from govt. Schools were selected for the study . A questionnaire measuring adolescent parental support of the school going boys and girls was used as a tool. This questionnaire has been developed by Dr. Nandewana and Dr. Nimmi Asana (udhaypur) which consists of 37 questions. The result of the study showed that parental support for choosing profession of physical education and allied discipline. Was in section I parent interest (74.17%) am highly supported section II parental behavior (58.33%) is given high support

towards physical education and sports. Section III parental a provision (70.33%) is highly supported. Overall support was seen for all three sections and marked as 18.63%.

KEYWORDS: *adolescents, physical education and allied discipline.*

INTRODUCTION:

Adolescent's parental support for



choosing profession of physical education and allied discipline is one of the most important contributions for larger participation and enhancement of better performance in sports events. Parents can help in the adolescent's development. Greater the parents support greater will be the social competence

{Self-esteem moral behavior, academic achievement and vocational achievements}. Support can be shown in several ways such as physical affection, companionship and sustained contact.

Period of adolescents is one of the most crucial and critical as well it is during this time that they

struggle with their own identity. They are progressing into a period of maturation and development that is scar an uncertain. They need guidance and strong support feature that comes from their parents Adolescents need their parents both for guidance and support during this crucial point in their life. He further indicated that parents by form the strong foundation for the social skills and self roles which have long term impact on the adolescent’s decision and plans when they provide the emotional security which the adolescents need.

METHODOLOGY

As every research demands a systematic method and procedure like this chapter adapts the following procedure including information regarding research design , source of data , selection of subjects , sampling method , selection of test and criterion measures , administration of tests and collection of data e. t .c . A research become successful accompanied and supported by some reliable and authentic data.

RESEARCH DESIGN

This research study goes through a method of survey research.

In fact, survey is a method of research that involves systematic completion, explanation, analysis and reporting of relevant facts concerning and enterprise, an institution/institutions and a population and is some aspects thereof . The basic rationale is to establish present practices, conditions or the effectiveness of the enterprise in order to provide guidance to their justification of development of present status.

Sample

The population of the study was the parents of school going boys and girls. Age ranged from 12 to 18 years . the total no of schools in district Ganderbal is approx. 49 . Out of these 4 schools were selected 2 from and 2 from govt. schools were the target population for the present study.

The study was conducted to find out the parental support for choosing profession of physical education and allied discipline. the subject(N =120) male and female parents were selected randomly from district Ganderballout of 120 subjects 60 from private schools and 60 from govt. Schools were selected for the study .

Tools

A questionnaire measuring adolescent parental support of the school going boys and girls wasused as a tool. this questionnaire has been developed by dr . nandewana and dr . nimmi asana (udhaypur) which consists of 37 questions .

Results

Table : 1adolescents parental intrest for choosing profession of physical education and allied discipline

Parental interest		
Total	High support	Low support
120	82	35
Percentage	68.33	29.16

According to the norms if the score falls 21-31 it means the parental interest shows high support and if the score falls down 0-20 it means parental interest shows low support.

It is revealed from table 1 that 68.33 % adolescent parental interest for choosing profession of physical education and allied discipline is found to be high where as 29.16 % shows low support

The percentage of the parental interest was graphically represented in fig . 1

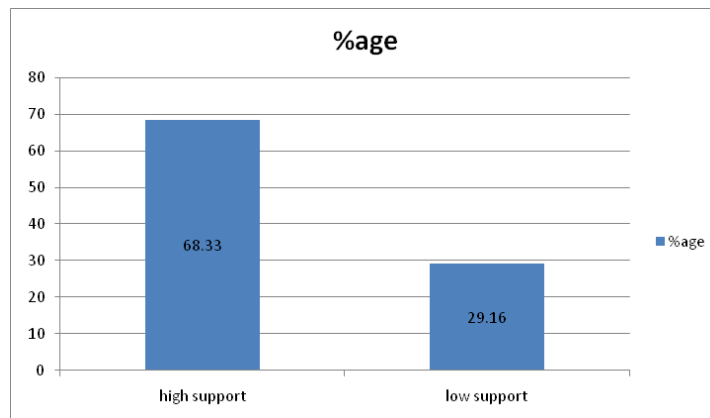


Table 2 Adolescent’sparental behavior for choosing profession of physical education and allied disciplines

Parental behavior		
Total	High support	Low support
120	61	39
percentage	50.83%	32.50

According to the norms if the score falls 35-51 it means that parental behavior shows high support and if the score falls down 0-34 it means parental behavior shows low support.

The percentage of the parental behavior was graphically in fig 2

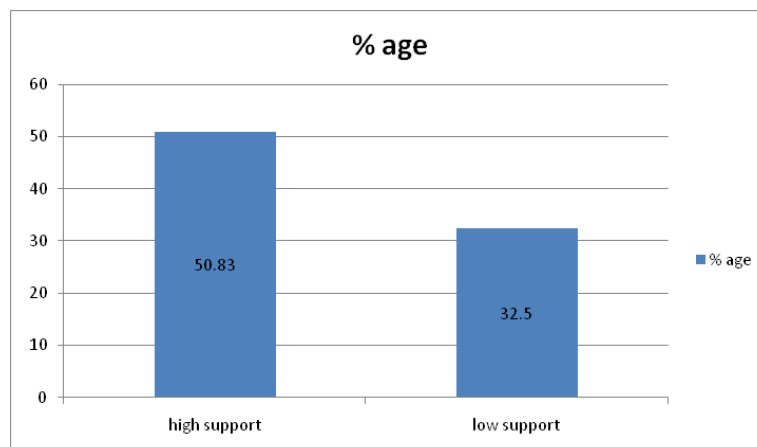


Table 3 Adolescents parental interest for choosing profession of physical education and allied discipline

Parental provision		
Total	High support	Low support
120	85	35
Percentage	70.33	29.7

According to the norms if the score falls 21-30 it means the parental provision shows high support and if the score falls down 0-20 it means parental shows low support.

It is examined from table 3 that 70.33% adolescent’s parental provision for choosing profession of physical education and allied discipline is found high and whereas 29.17 % shows low support The %age of the parental provision was graphically represented in fig 3

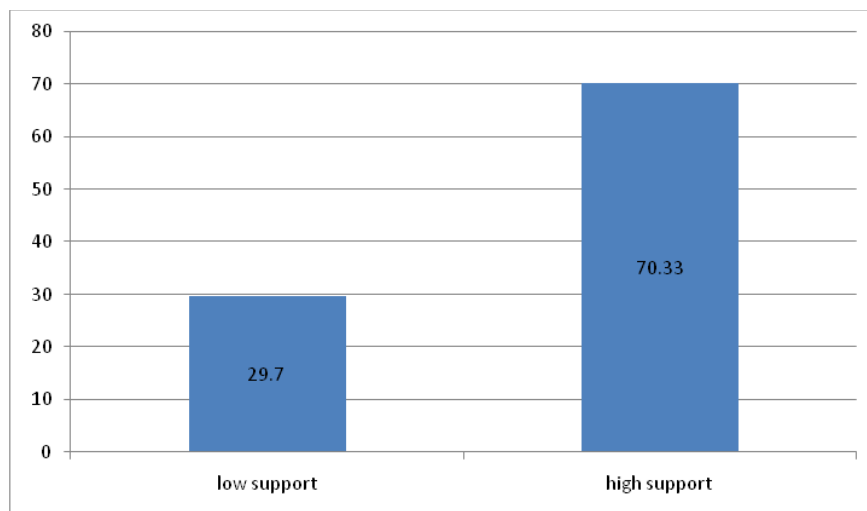


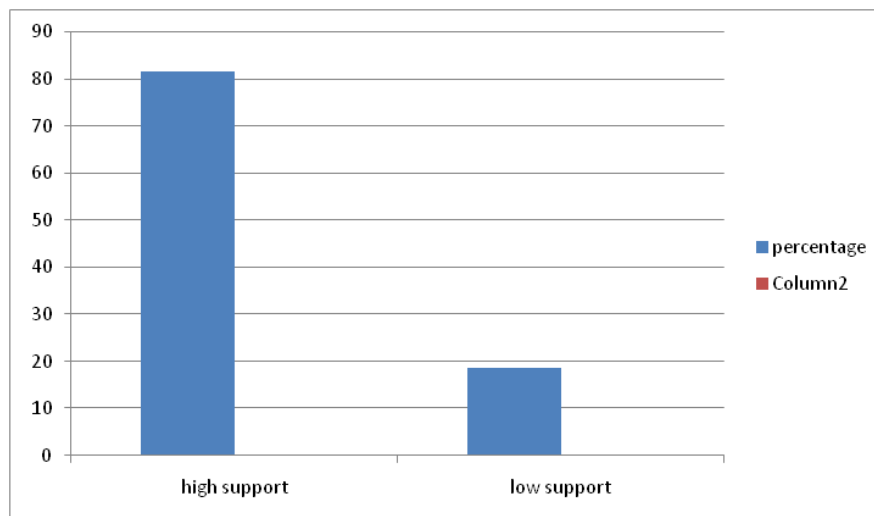
Table 4 Adolescents parental overall support for choosing profession of physical education and allied disciplines

Overall support		
Total	High support	Low support
120	98	22
Percentage	81.67	18.63

According to the norms if the overall score falls 75 and above it means it shows high support and if the score falls down 0-74 it means it is low support

It is examined from table 4 that 81.67% adolescents parents overall support for choosing profession of physical education and allied discipline and found to be high whereas 18.63% shows low support

The %age of the parental overall support was graphically represented in fig 4



SUMMARY

The purpose of the study was to investigate the adolescent’s parental support for choosing profession of physical education and allied discipline. In this study of parental support, the research scholar distributed 120 questionnaires among 120 of school going boys and girls of four schools of district Ganderbal in Jammu and Kashmir. The questionnaire of Dr. Shobha Nandewana and Dr. Nimmi asana (Udhyour) was employed for collection of data. the collected data was treated statically by applying percentage and chi square test the level of significance to test the significant differences if any was set at 0.05. The result of the study showed that parental support for choosing profession of physical education and allied discipline. Was in section I parent interest (68.33%) and highly supported section II parental behavior (50.83%) is given high support towards physical education and sports. Section III parental a provision (70.33%) is highly supported. Overall support was seen for all three sections and marked as 18.63%

The findings showed that majority of parents extended high parental support for choosing profession of physical education and allied discipline which are notable.

1. Parents agreed and supported their adolescents for that participation in physical education.
2. Favored the need of physical education and allied discipline.
3. Agreed as it provides an opportunity to develop friendly relationship with others.
4. Agreed upon physical, mental, emotional, social and educational contribution of physical education and allied discipline.

CONCLUSIONS

1. The adolescent’s parental support showed for choosing profession of physical education and allied discipline was found to be supported.
2. It was also observed that the adolescents were highly supported by their parents.
3. It was also observed that parent’s high support develops adolescent’s interest and positive thinking towards any profession.

RECOMMENDATIONS

Based on the conclusion of the study the following recommendations are made:-

1. Similar study can also be conducted on girl's parental support towards the physical education.
2. Similar study can be conducted on the importance of participation in physical education and sports events.
3. Similar study can be conducted on different age groups.

REFERENCES

- Alia K. A, Wilson D. K, St George S. M, Schneider E, Kitzman-Ulrich H. Effects of parenting style and parent-related weight and diet on adolescent weight status. *Journal of Pediatric Psychology*. 2013;38(3):321–329. doi: 10.1093/jpepsy/jss127. [PMC free article] [PubMed] [Cross Ref]
- Arnett, J. (1999). Adolescent storm and stress, reconsidered. *American Psychologist*, 54(5), 317-326
- Bandura A. Health promotion by social cognitive means. *Health Education and Behavior*. 2004;31(2):143–164. doi: 10.1177/1090198104263660.
- Basch C. E. Healthier students are better learners: High-quality, strategically planned, and effectively coordinated school health programs must be a fundamental mission of schools to help close the achievement gap. *Journal of School Health*. 2011;81(10):650–662.
- Grusec, J.E. and Goodnow, J.J. (1994) 'Impact of parental discipline methods on the child's internalisation of values: A reconceptualisation of current points of view', *Developmental Psychology*, Vol. 30, pp. 4-19.
- M.S. Wright, D.K. Wilson, S. Griffin, A. Evans A qualitative study of parental modeling and social support for physical activity in underserved adolescents *Health Education Research*, 25 (2010), pp. 224-23
- Parental influences on physical activity in children: An exploration of potential mechanisms *Pediatric Exercise Science*, 15 (2003), pp. 19-33
- World Health Organization, W.H.O. Global recommendations on physical activity for health World Health Organization, Geneva (2010)
- X. Yang, R. Telama, M. Hirvensalo, J.S. Viikari, O.T. Raitakari Sustained participation in youth sport decreases metabolic syndrome in adulthood *International Journal of Obesity*, 33 (2009), pp. 1219-1226, 10.1038/ijo.2009.171

Publish Research Article

International Level Multidisciplinary Research Journal For All Subjects

Dear Sir/Mam,

We invite unpublished Research Paper, Summary of Research Project, Theses, Books and Books Review for publication, you will be pleased to know that our journals are

Associated and Indexed, India

- ★ Directory Of Research Journal Indexing
- ★ International Scientific Journal Consortium Scientific
- ★ OPEN J-GATE

Associated and Indexed, USA

- DOAJ
- EBSCO
- Crossref DOI
- Index Copernicus
- Publication Index
- Academic Journal Database
- Contemporary Research Index
- Academic Paper Database
- Digital Journals Database
- Current Index to Scholarly Journals
- Elite Scientific Journal Archive
- Directory Of Academic Resources
- Scholar Journal Index
- Recent Science Index
- Scientific Resources Database

Review Of Research Journal
258/34 Raviwar Peth Solapur-
413005, Maharashtra
Contact-9595359435

E-Mail-ayisrj@yahoo.in/ayisrj2011@gmail.com