

Vol 5 Issue 5 Feb 2016

ISSN No : 2249-894X

---

*Monthly Multidisciplinary  
Research Journal*

*Review Of  
Research Journal*

Chief Editors

---

**Ashok Yakkaldevi**  
A R Burla College, India

**Ecaterina Patrascu**  
Spiru Haret University, Bucharest

**Kamani Perera**  
Regional Centre For Strategic Studies,  
Sri Lanka

Review Of Research Journal is a multidisciplinary research journal, published monthly in English, Hindi & Marathi Language. All research papers submitted to the journal will be double - blind peer reviewed referred by members of the editorial Board readers will include investigator in universities, research institutes government and industry with research interest in the general subjects.

### Regional Editor

Dr. T. Manichander

### Advisory Board

Kamani Perera Regional Centre For Strategic Studies, Sri Lanka	Delia Serbescu Spiru Haret University, Bucharest, Romania	Mabel Miao Center for China and Globalization, China
Ecaterina Patrascu Spiru Haret University, Bucharest	Xiaohua Yang University of San Francisco, San Francisco	Ruth Wolf University Walla, Israel
Fabricio Moraes de Almeida Federal University of Rondonia, Brazil	Karina Xavier Massachusetts Institute of Technology (MIT), USA	Jie Hao University of Sydney, Australia
Anna Maria Constantinovici AL. I. Cuza University, Romania	May Hongmei Gao Kennesaw State University, USA	Pei-Shan Kao Andrea University of Essex, United Kingdom
Romona Mihaila Spiru Haret University, Romania	Marc Fetscherin Rollins College, USA	Loredana Bosca Spiru Haret University, Romania
	Liu Chen Beijing Foreign Studies University, China	Ilie Pinte Spiru Haret University, Romania
Mahdi Moharrampour Islamic Azad University buinzahra Branch, Qazvin, Iran	Nimita Khanna Director, Isara Institute of Management, New Delhi	Govind P. Shinde Bharati Vidyapeeth School of Distance Education Center, Navi Mumbai
Titus Pop PhD, Partium Christian University, Oradea, Romania	Salve R. N. Department of Sociology, Shivaji University, Kolhapur	Sonal Singh Vikram University, Ujjain
J. K. VIJAYAKUMAR King Abdullah University of Science & Technology, Saudi Arabia.	P. Malyadri Government Degree College, Tandur, A.P.	Jayashree Patil-Dake MBA Department of Badruka College Commerce and Arts Post Graduate Centre (BCCAPGC), Kachiguda, Hyderabad
George - Calin SERITAN Postdoctoral Researcher Faculty of Philosophy and Socio-Political Sciences Al. I. Cuza University, Iasi	S. D. Sindkhedkar PSGVP Mandal's Arts, Science and Commerce College, Shahada [ M.S. ]	Maj. Dr. S. Bakhtiar Choudhary Director, Hyderabad AP India.
REZA KAFIPOUR Shiraz University of Medical Sciences Shiraz, Iran	Anurag Misra DBS College, Kanpur	AR. SARAVANAKUMARALAGAPPA UNIVERSITY, KARAIKUDI, TN
Rajendra Shendge Director, B.C.U.D. Solapur University, Solapur	C. D. Balaji Panimalar Engineering College, Chennai	V.MAHALAKSHMI Dean, Panimalar Engineering College
	Bhavana vivek patole PhD, Elphinstone college mumbai-32	S.KANNAN Ph.D , Annamalai University
	Awadhesh Kumar Shirotriya Secretary, Play India Play (Trust), Meerut (U.P.)	Kanwar Dinesh Singh Dept.English, Government Postgraduate College , solan

More.....

# Review of Research

International Online Multidisciplinary Journal

ISSN: 2249-894X

Impact Factor : 3.1402(UIF)

Volume - 5 | Issue - 5 | Feb - 2016



## GROWTH OF AGRICULTURE IN COMMAND AREA OF UJJANNI PROJECT IN SOLAPUR DISTRICT



**Dr. S. J. Awate**

**Head and Associate Professor, Geography Department,  
Walchand College of Arts and Science, Solapur.**

### ABSTRACT :

Growth of agriculture is very important for the developing country like India. Because agriculture plays an important role in generating employment potential in rural areas. Solapur is an important agricultural area in Maharashtra. The irrigation development in this area has witness at significant change in the last two decade sugarcane, fruit, oil seeds, dairy farming, etc are grown from last two decade. Sugarcane is very important cultivation in this command area ofUjjani project. Agricultural development is main object of this project. In this command area per hectare production is

increased irrigation from last two decade because of increased irrigation facilities in this command area. For the present investigation an attempt is to the growth of agricultural cultivation in this region.

**KEY WORDS:** *employment, decade, impact command.*

### INTRODUCTION :

Agriculture is backbone of Indian economy. Every human activity is related to agriculture direct or indirect. In Maharashtra Solapur district is also one of the agricultural district which is coming under drought prone area of Maharashtra. This region is generally experiences semi arid climate, characterized by monsoon conditions. The average summer maximum temperature is 43oCwhile average winter minimum temperature is 17oC. The entire district is rain shadow there fore it is poor condition of irrigation in this command area in eight month viz. October to May. In this region Ujjani project is given boost to develop the agriculture and way of life survival in this command area of Ujjani project.

Objectives: The present study aims of growth of agricultural development in Ujjani command



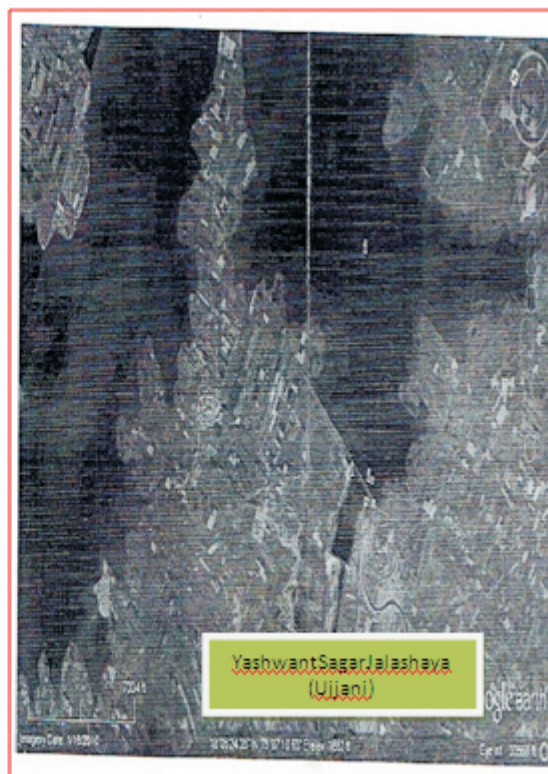
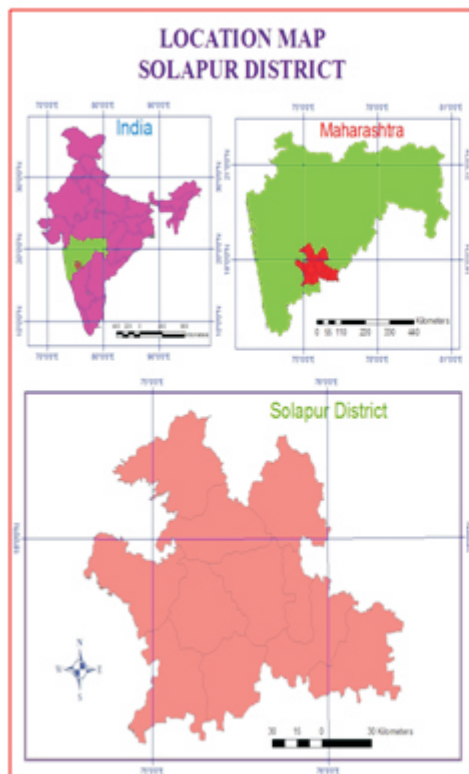
area of solapur district. The object of the study is also showing the change of the major agricultural practices.

**DATABASE AND METHODOLOGY:**

The data for present study have been obtained from secondary data. This data regarding canal lift irrigation area have been obtain from published and unpublished report of irrigation, department of agriculture office. The collected data have been processed and presented through tables and maps.

**STUDY REGION:**

The district of solapur lies entirely in the Bhima-Sina Man river basin of Maharashtra state. Bhima is tributary of river Krishna but in Maharashtra Bhima basin is separate



command area. The solapur district is bounded by 17°5' N latitude to 18°32' N latitude and 74°42' E longitude to 76°15' E longitude. The total command area of this region is covering 12356 Sq.kms. from Pandharpur, Malshiras, Mohol, Madha, North Solapur, South Solapur, Akkalkot and Mangalwedha tahsil. All over this region is very flat into shape and famous for fertile black soils. Climate of this region is favourable for variety of agriculture. In view of this the study of this command area of solapur district has been undertaken for the research paper.

**DISCUSSION:**

Development of agriculture in command area of Ujjani irrigation project is the main object of construction of his project. Before the Ujjani project this command area has face varies problems related irrigation. This region is depended upon rainfall. But after construction of this project cenario of this region is completely changed. The maximum canal and sub canal chanles changes are constructed in this command area. The land of this irrigation is completely plain by Government with

the help of Gada. This department develop the land in various plain systems. This irrigation is irrigated by perennial as well as by eight monthly cropping system.

**Table No.1**  
**Solapur Distirct**  
**Irrigation by canal and lift irrigation in study region**

Sr. No.	Name of Canal	Length (km)	By Perennial Pattern Agri in hect (length in Km)	By Eight monthly cropping (length km)	Total Area (in Hect)
1	Ujjani Left Canal	126	29830	126	29830
2	Ujjani Right Canal	112	44100	132	51800
3	Begampur Branch	34	10135	55	17695
4	Kurul Branch	38	8190	65	14890
5	Mohol-Karmala Canal	65	20685	170	33585
6	Lift Irrigation Backwater	-	8500	-	34883
	Total		121440	548	182683

The Bhima Ujjani irrigation project has been divided into five canal i.e.Ujjani left canal which is 126 kms length Ujjani right canal 132 kms Begampur branch 55 kms, Kurul Branch 65 Kms, Mohol-Karmala canal 170 kms. The total perennial cropping area is 121440 kms and by eight monthly irrigation is observed 182683 hect.

In 1986 the Government of Maharashtra adopted eight monthly cropping pattern to external the maximum irrigation facilities in command area.

**Table No.2**  
**Solapur District**  
**Talukawise irrigated area in command area by flow (canal) system**

Sr. No.	Tahsil	No of beneficial villages	Area under Irrigation (hect)	Percentage
1	Madha	20	3280	2.22
2	Pandharpur	73	34454	23.31
3	Mohol	56	38663	26.16
4	Mangalwedha	36	25912	17.53
5	Malshiras	16	7054	4.77
6	North solapur	23	10985	7.43
7	South Solapur	22	18412	12.46
8	Akkalkot	18	9040	6.12
		264	147800	100

Source: A Note on scope and status at the Bhima Irrigation Project Development Pune. 2005 Pp-01

With long experience of gambling of agricultural production with monsoon, this command area is given boost to growing new cash crops which are alternative to traditional agriculture. It is observed that (table No.2) maximum beneficiaries area is in Pandharpur, Mohol and Mangalwedh tahsil. Out of 264 beneficiaries villages 165 villages are (67%) from this three tahsils. Total area is beneficial 99029 hect. From this three tahsils. Effect of this in this tahsil maximum concentration of sugar cane is observed and maximum sugar factories are located in this command area. This region is one of the best irrigated and new innovative cultivable area in solapur district.

**CONCLUSION:**

The forging study reveals that besides suitable agro-climate condition the command area of Ujjani project have played a dominant role in the adoption the new cropping pattern in study region. Favourable irrigation department policy reliable location is other contributions factors responsible for wide growth of agriculture in this region.

**REFERENCES:**

1. Government of Maharashtra, 2010-Maharashtra Agriculture Department Publication
2. Pawar C.T. and Shinde S.D. 1979- Well Irrigation in upland district of south Maharashtra
3. A note on Bhima Ujjani irrigation project States Devop. Pune 2005

# Publish Research Article

## International Level Multidisciplinary Research Journal For All Subjects

Dear Sir/Mam,

We invite unpublished Research Paper, Summary of Research Project, Theses, Books and Books Review for publication, you will be pleased to know that our journals are

### Associated and Indexed, India

- ★ Directory Of Research Journal Indexing
- ★ International Scientific Journal Consortium Scientific
- ★ OPEN J-GATE

### Associated and Indexed, USA

- DOAJ
- EBSCO
- Crossref DOI
- Index Copernicus
- Publication Index
- Academic Journal Database
- Contemporary Research Index
- Academic Paper Database
- Digital Journals Database
- Current Index to Scholarly Journals
- Elite Scientific Journal Archive
- Directory Of Academic Resources
- Scholar Journal Index
- Recent Science Index
- Scientific Resources Database

Review Of Research Journal  
258/34 Raviwar Peth Solapur-  
413005, Maharashtra  
Contact-9595359435

E-Mail-ayisrj@yahoo.in/ayisrj2011@gmail.com