

Vol 2 Issue 6 March 2013

ISSN No : 2249-894X

*Monthly Multidisciplinary
Research Journal*

*Review Of
Research Journal*

Chief Editors

Ashok Yakkaldevi
A R Burla College, India

Flávio de São Pedro Filho
Federal University of Rondonia, Brazil

Ecaterina Patrascu
Spiru Haret University, Bucharest

Kamani Perera
Regional Centre For Strategic Studies,
Sri Lanka

Welcome to Review Of Research

RNI MAHMUL/2011/38595

ISSN No.2249-894X

Review Of Research Journal is a multidisciplinary research journal, published monthly in English, Hindi & Marathi Language. All research papers submitted to the journal will be double - blind peer reviewed referred by members of the editorial Board readers will include investigator in universities, research institutes government and industry with research interest in the general subjects.

Advisory Board

Flávio de São Pedro Filho Federal University of Rondonia, Brazil	Delia Serbescu Spiru Haret University, Bucharest, Romania	Mabel Miao Center for China and Globalization, China
Kamani Perera Regional Centre For Strategic Studies, Sri Lanka	Xiaohua Yang University of San Francisco, San Francisco	Ruth Wolf University Walla, Israel
Ecaterina Patrascu Spiru Haret University, Bucharest	Karina Xavier Massachusetts Institute of Technology (MIT), USA	Jie Hao University of Sydney, Australia
Fabricio Moraes de Almeida Federal University of Rondonia, Brazil	May Hongmei Gao Kennesaw State University, USA	Pei-Shan Kao Andrea University of Essex, United Kingdom
Anna Maria Constantinovici AL. I. Cuza University, Romania	Marc Fetscherin Rollins College, USA	Loredana Bosca Spiru Haret University, Romania
Romona Mihaila Spiru Haret University, Romania	Liu Chen Beijing Foreign Studies University, China	Ilie Pinte Spiru Haret University, Romania
Mahdi Moharrampour Islamic Azad University buinzahra Branch, Qazvin, Iran	Nimita Khanna Director, Isara Institute of Management, New Delhi	Govind P. Shinde Bharati Vidyapeeth School of Distance Education Center, Navi Mumbai
Titus Pop PhD, Partium Christian University, Oradea, Romania	Salve R. N. Department of Sociology, Shivaji University, Kolhapur	Sonal Singh Vikram University, Ujjain
J. K. VIJAYAKUMAR King Abdullah University of Science & Technology, Saudi Arabia.	P. Malyadri Government Degree College, Tandur, A.P.	Jayashree Patil-Dake MBA Department of Badruka College Commerce and Arts Post Graduate Centre (BCCAPGC), Kachiguda, Hyderabad
George - Calin SERITAN Postdoctoral Researcher Faculty of Philosophy and Socio-Political Sciences Al. I. Cuza University, Iasi	S. D. Sindkhedkar PSGVP Mandal's Arts, Science and Commerce College, Shahada [M.S.]	Maj. Dr. S. Bakhtiar Choudhary Director, Hyderabad AP India.
REZA KAFIPOUR Shiraz University of Medical Sciences Shiraz, Iran	Anurag Misra DBS College, Kanpur	AR. SARAVANAKUMARALAGAPPA UNIVERSITY, KARAIKUDI, TN
Rajendra Shendge Director, B.C.U.D. Solapur University, Solapur	C. D. Balaji Panimalar Engineering College, Chennai	V.MAHALAKSHMI Dean, Panimalar Engineering College
	Bhavana vivek patole PhD, Elphinstone college mumbai-32	S.KANNAN Ph.D , Annamalai University
	Awadhesh Kumar Shirotriya Secretary, Play India Play (Trust), Meerut (U.P.)	Kanwar Dinesh Singh Dept.English, Government Postgraduate College , solan

More.....



INTEGRATED USE OF LANDSAT ETM+ AND SRTM DEM TO DECIPHER LATERITES IN AREA AROUND LANJA, DISTRICT RATNAGIRI, MAHARASHTRA, INDIA.

V. M. DIKSHIT

DBF Dayanand College of Arts and Science, Solapur .

Abstract

Geological studies are requiring standard methods and procedures to acquire precisely information. However, traditional methods might be difficult to use due to complex topography, thick vegetation and soil cover and mountainous region in the area under study. In this paper, we consider the application of Landsat 7 ETM+ imagery and Shuttle Radar Topographic Mission (SRTM) digital elevation model (DEM) for laterite mapping of the study area. The accuracy assessment was based on ground control points acquired by GPS and reference points digitized from Landsat imagery along segments of selected rivers. The area of investigation is Konkan Coastal Belt (KCB) characterized by the common geological features as basaltic flows and laterite cappings. The laterites were discriminated using feature extraction workflow in ENVI EX platform. Different threshold values were used to find the most probable areas of lateritic zones in the image. Field investigation was carried out and GPS points are mapped to use as Ground Control Points (GCPs). The threshold values were determined from a published geological map and known GCPs of lateritic areas with good exposure in the image. SRTM DEM (30m resolution) was used to understand the levels of laterites and their tectonic significance.

KEYWORDS:

Laterites, Landsat ETM+, SRTM DEM, Threshold values, KCB

1. INTRODUCTION:

Evolution of Western Ghat has played significant role in the genesis of Konkan Coastal Belt (KCB). The tectonic uplift initiated by the collision of Indian and Eurasian Plate during Early Tertiary has resulted in the formation of Western Ghat escarpment. The western extension of the uplifted Cenozoic plateau that was submerged under waters of the Arabian Sea has evolved as Konkan. This narrow coastal belt is arranged in step like terraces, pointing to the recent oscillations in the sea level and of submergence as evident from the drowned valleys, lagoons and sand bars. Wave cut cliffs and platforms are also common along the coastline indicating changes in the sea level.

The basaltic flows and intrusive, Intertrapean and laterite capping are common geological features of Maharashtra coast. The basement of basalt flows was formed by extruded Deccan Volcanic activity during Late Cretaceous – Early Tertiary period. The coast displays a variety of landforms developed due to fluvial and marine activity, both erosional and depositional during the Tertiary and Quaternary periods.

1.1 Study area:

The area selected for the present study is Southwestern part of the Deccan Volcanic Province (DVP) between Ratnagiri and Vijaydurg in the State of Maharashtra. The study area is bounded between Lat. 16035' N and Lat. 17000' N and Long. 73017' E and 73048' E (Fig. 1) and cover an area about 2000 sq.km. The study area exposes Poladpur and Ambenali formations (68+0.6, 65+0.7 Ma respectively) represented by massive and amygdaloidal basaltic flows. At some places these basaltic flows are overlain by laterite capping (duricrust). Physiographically the Deccan Volcanic Province (DVP) can be divided into three regions viz. (1) the Konkan Coastal Belt, (2) the Western Ghats and (3) the Maharashtra plateau. The Konkan Coastal Belt (KCB) is coastal low-land forming narrow and elongated strip of land whose average width is about 40 km. The footslope of the Western Ghat indicates retreat of the escarpment during Cenozoic time. The laterites present as capping at KCB and upland indicate preservation of palaeo-surfaces. (Widdowson and Cox, 1996 and Widdowson, 1997) The laterites in the KCB are present as capping to the isolated basaltic plateaus raised in Konkan lowland. The younger lateritic surface, occur in the KCB at elevation between 10 and 200m asl on the older basaltic flows. A laterite free corridor of 10 to 15km width, between Sahyadri escarpment and laterite covered coastal plain could be the result of scarp retreat, subsequent to the formation of this surface in the Miocene (Widdowson and Cox, 1996). Kale and Subbarao, 2004 also estimated similar age from calculation of the former extent of valleys in the upland area.



Fig.1: Location map of the study area

2. METHODOLOGY:

2.1.:Data used:

Landsat -7 Enhanced Thematic Mapper + (path 147 and row 048) is used to for visual interpretation and manual digitizing of lineaments in the Konkan Coastal Belt province. Source of this data set was the Global Land Cover Facility (GLCF), www.landcover.org. Landsat-7 ETM+ is a multispectral scanner supplies high resolution visible and infrared imagery with thermal and panchromatic image of spectral range between 0.450 and 2.35 μ m. The data has pixel resolution of 30m (for bands 1 to 5 and 7). The panchromatic band has resolution 15m and the thermal infrared band is 60m. The Shuttle Radar Topographic Mission (SRTM) is elevation data and most complete high-resolution digital topographic data base of earth. The capture resolution is 3 arc second with pixel resolution 90m in World Reference System (WRS-2) and dated Feb. 2000 is used to overlay extracted laterite outcrops. Using the Synthetic Aperture Radar (SAR) interferometry to produce the first near-global high resolution digital elevation model (DEM)

of the Earth, Application of this resource had the advantage of furnishing digital elevation information with a minimum influence of vegetation and perennial clouds. The Survey Of India (SOI) topographic map of the study region at scale 1:50,000 is used for getting geoinformation. The ground survey was carried out to collect 113 reference points at random using hand held Global Positioning System (GPS) receiver. This data is used for accuracy assessment, resampling of images, georeferencing and ground truthing and mapping of laterites and basalts outcrops.

2.2: Pre-processing Landsat 7 ETM+ images:

The scene is georeferenced in the UTM projection and the WGS-84 ellipsoid, Zone 43N. The data was radiometrically converted to sensor reflectance using an image-based correction method. Processing of the image included radiometric correction to remove atmospheric effects. Reflectance is an intrinsic property of materials and is independent of illumination conditions, slope, sensor, and atmospheric effects. For the purpose of geological feature extraction Landsat TM band 7 (spectral range: 2.08 to 2.35 μm) has already proved to be most suitable for lithological discrimination. TM band 4 (spectral range: 0.76 to 0.90 μm) is the only band representing near infrared region and gives good information about the vegetation cover. But band 3 (spectral range: 0.63 to 0.69 μm) is proved to be useful for soil-boundary and geological-boundary delineations. Band 3 also exhibits more contrast than bands 1 and 2 because of the reduced effect of atmospheric attenuation. Therefore a colour composite of bands 7(red), 4(green), 3(blue)

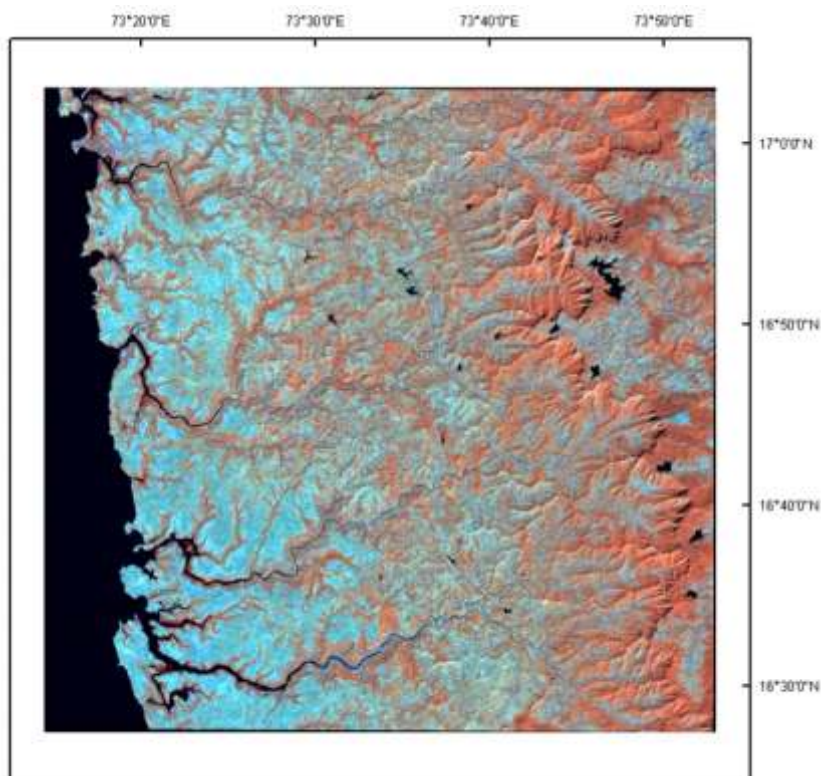


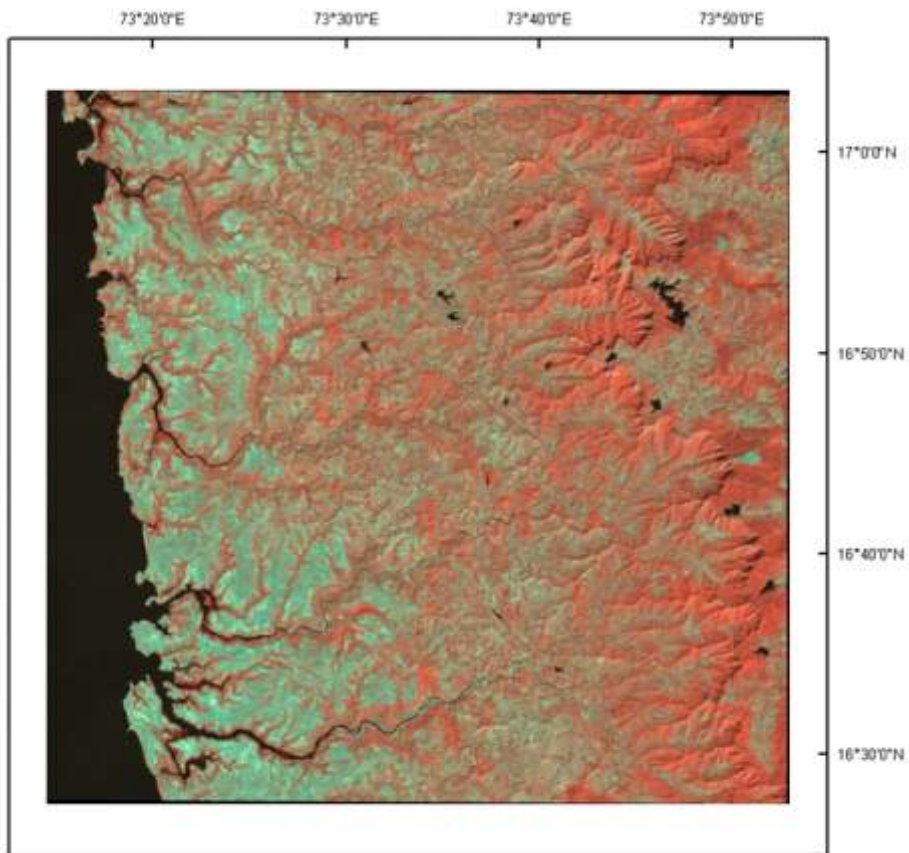
Fig. 2A: False Colour Composite (FCC) of bands 7(red), 4(green), 3(blue)

(Fig. 2A) was prepared to delineate the laterite and bauxite cappings as well as the extent of vegetation and soil cover in this region. (Das I.C.) The enhancement techniques like contrast stretching, histogram equalization, directional filtering have been used. The GCPs are mapped on the imagery for resampling and orthorectifying the image. The GCPs recorded with the help of GPS instrument also help to locate the laterites.

The methods of vegetation suppression and feature extraction workflow were used to discriminate laterites in ENVIEX environment.

Vegetation Suppression removes the vegetation spectral signature from multispectral and hyperspectral imagery, using information from red and near-infrared bands. This method helps better to

interpret geologic and urban features and works best with open-canopy vegetation in medium spatial resolution (30 m) imagery. The model calculates the relationship of each input band with vegetation, then it



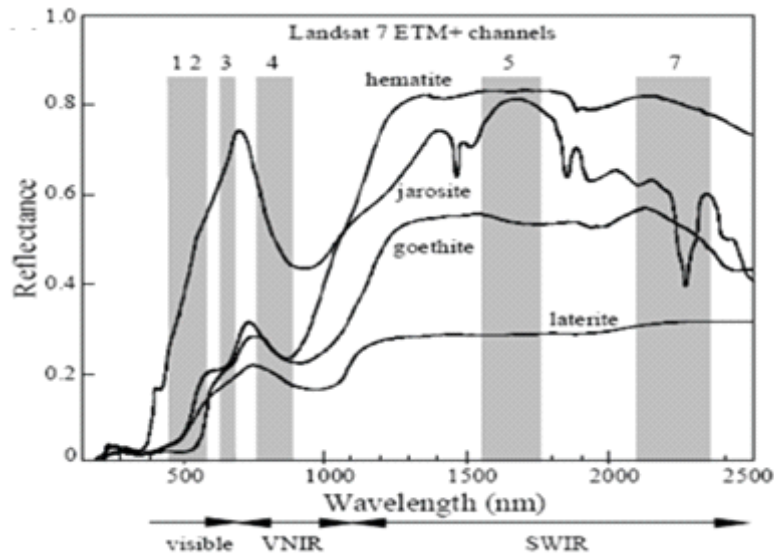


Fig. 3. Spectral reflectance of laterites (After. Hunt GR, Ashley RP (1979))

Fig. 4: The discriminated laterite exposure segments (White in color) from the FCC.

Thus, the map of laterite outcrops was prepared from the segmented image. (Fig. 5)

The discriminated laterite segments are then overlaid on pre-processed and resampled (conversion of resolution from 90m to 30m) DEM to understand the tectonic setting and palaeo-surfaces of the study area. The laterite outcrop map was overlaid on DEM to understand their elevation difference and tectonic setting in the study area. (Fig. 6).

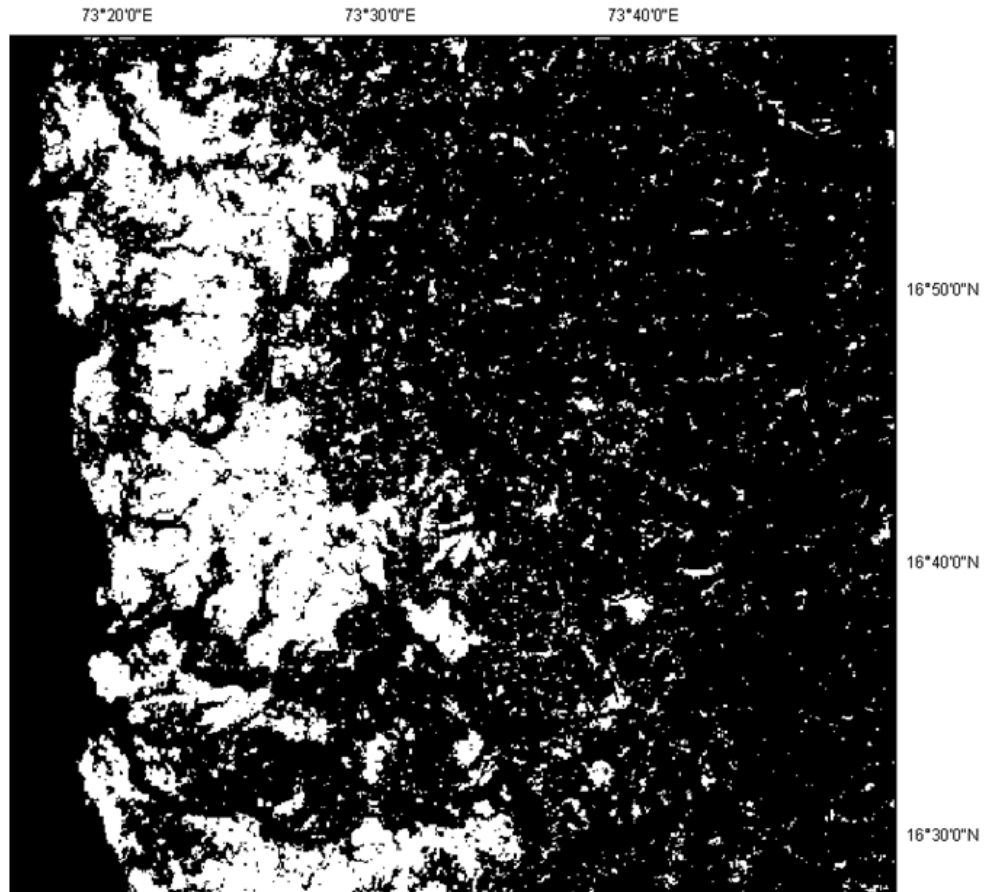


Fig.5 Geological map of the study area

The result shows the younger lateritic surface, occur in the KCB at elevation between 10 and 200m asl on the older basaltic flows. A laterite free corridor of 10 to 15km width, between Sahyadri escarpment and laterite covered coastal plain could be the result of scarp retreat, subsequent to the formation of this surface in the Miocene (Widdowson and Cox (1996)). The total area covered by the laterite is 1437 sq.km.

4. CONCLUSION:

In this paper we define the method to discriminate laterites using landsat ETM+ images. The threshold values are derived for segmentation of laterites, basalts and water bodies. Two level laterites are mapped, one at upland and other at Konkan lowland. Their elevations difference determined to understand tectonic setting. The lateriteless strip is mapped.

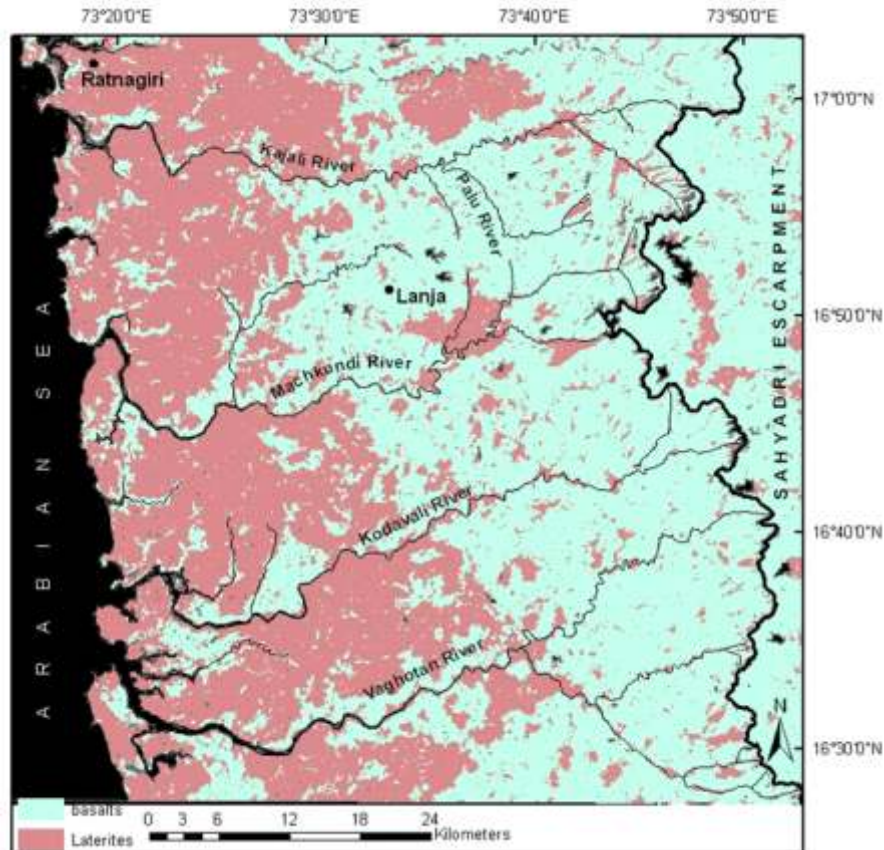
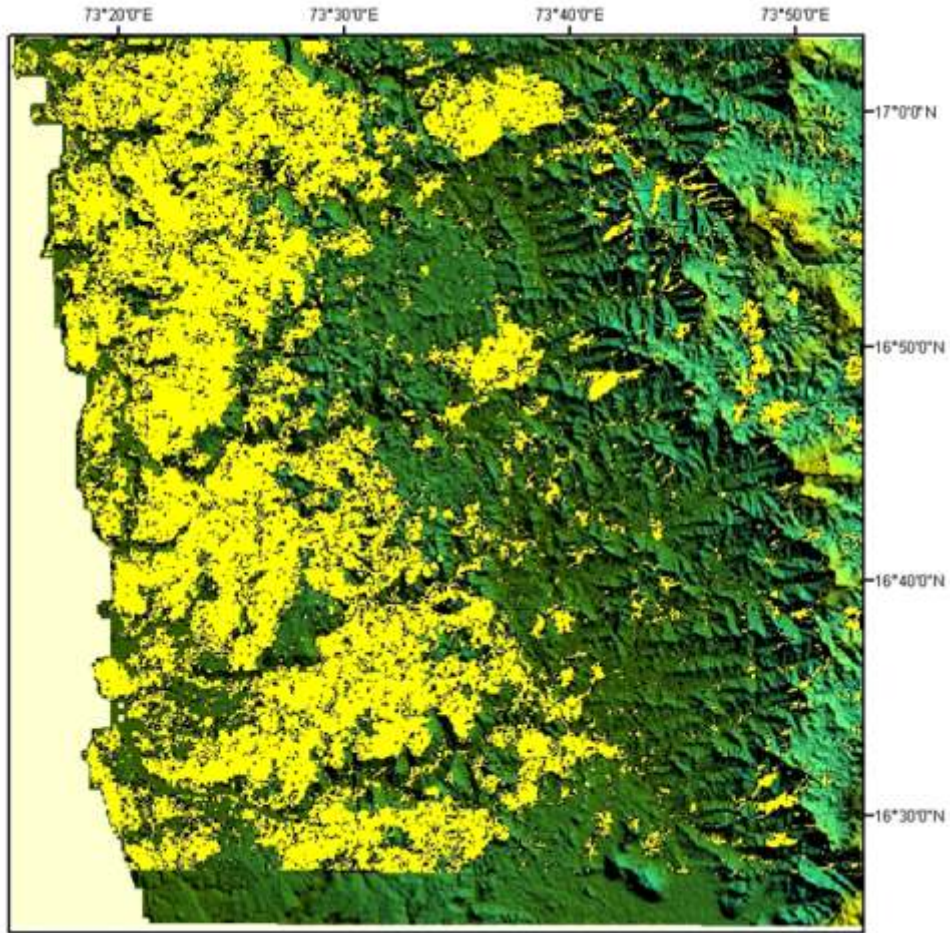


Fig. 6: Laterite outcrops draped over digital elevation model.

REFERENCES:

- 1.Hunt GR, Ashley RP (1979) Spectra of altered rocks in the visible and near infrared. *Econ Geol* 74, 1613–1629
- 2.I. C. Das, Spectral signatures and spectral mixture modeling as a tool for targeting aluminous laterite and bauxite ore deposits, Koraput, India, GISdevelopment.net
- 3.Kale, V.S. and Subbarao, K.V. (2004) Some observations on the Recession of the Western Ghat Escarpment in the Deccan Trap Region, India: Based on Geomorphological Evidences. *Trans. Japanese Geomorphological Union*, v.25, p. 231-245.
- 4.Kennedy PJ (1989) Monitoring the phenology of Tunisian grazing lands. *Int J Remote Sens* 10, 835–45.
- 5.Myint Soea, et al. 2008 Lateritic soil mapping of the Phrae basin, northern Thailand using satellite data.. *ScienceAsia*, v.34, 307-316
- 6.Sezgin M, Sankur B (2004) Survey over image thresholding techniques and quantitative performance evaluation. *J Electron Imaging* 13, 146–65.
- 7.Townsend TE (1987) Discrimination of iron alteration minerals in visible and near infrared reflectance data. *J Geophys Res* 92, 1441–54.
- 8.Widdowson M 1997 Tertiary palaeosurfaces of the SW Deccan, Western India: implication for passive margin uplift. In: *Palaeosurfaces: Recognition, Reconstruction and Palaeoenvironmental Interpretation* (ed.) Widdowson M, *Geol. Soc. Spec. Publ.* 120 p. 221–248.
- 9.Widdowson M and Cox K G 1996 Uplift and erosional history of the Deccan Traps, India: Evidence from laterites and drainage patterns of the Western Ghats and Konkan coast; *Earth Planet. Sci. Lett.* 137 P. 57–69.



Publish Research Article

International Level Multidisciplinary Research Journal For All Subjects

Dear Sir/Mam,

We invite unpublished Research Paper, Summary of Research Project, Theses, Books and Books Review for publication, you will be pleased to know that our journals are

Associated and Indexed, India

- ★ Directory Of Research Journal Indexing
- ★ International Scientific Journal Consortium Scientific
- ★ OPEN J-GATE

Associated and Indexed, USA

- DOAJ
- EBSCO
- Crossref DOI
- Index Copernicus
- Publication Index
- Academic Journal Database
- Contemporary Research Index
- Academic Paper Database
- Digital Journals Database
- Current Index to Scholarly Journals
- Elite Scientific Journal Archive
- Directory Of Academic Resources
- Scholar Journal Index
- Recent Science Index
- Scientific Resources Database

Review Of Research Journal
258/34 Raviwar Peth Solapur-413005, Maharashtra
Contact-9595359435
E-Mail-ayisrj@yahoo.in/ayisrj2011@gmail.com
Website : www.ror.isrj.net